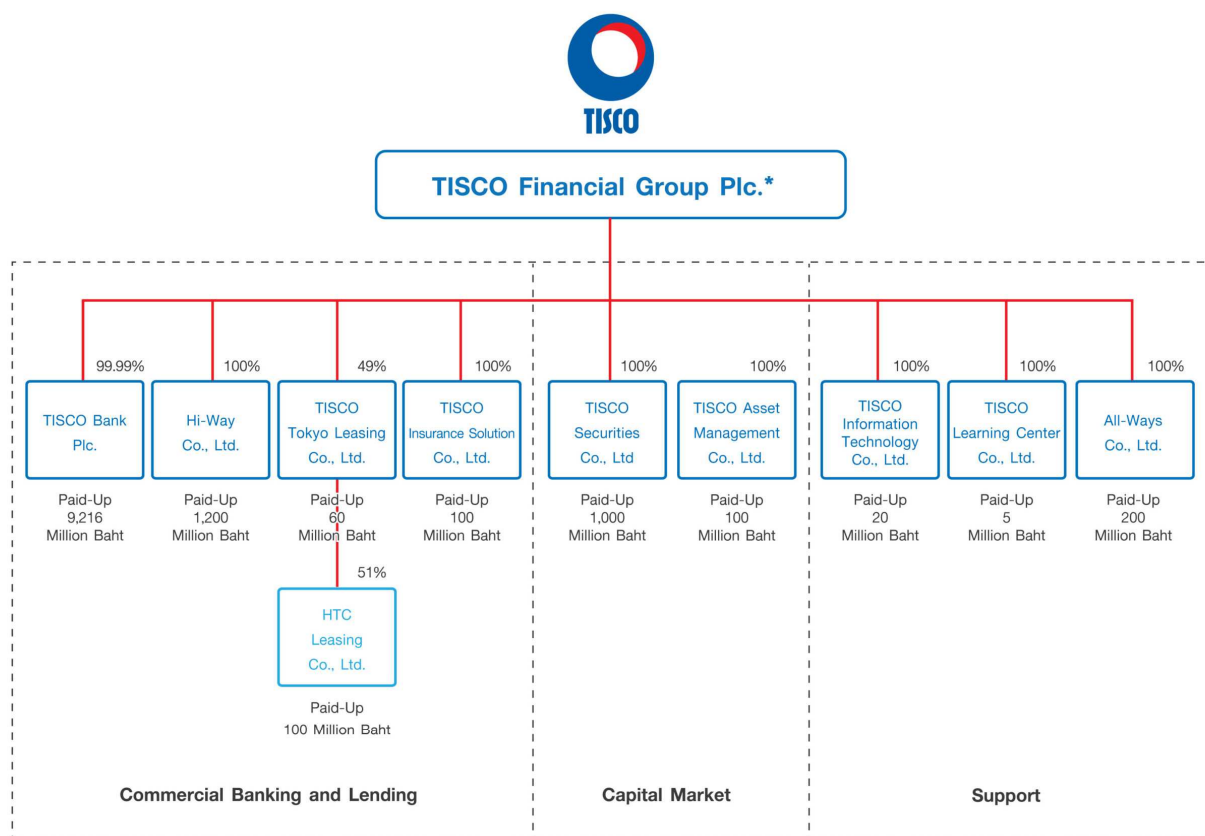


## Information Disclosures under Basel III Capital Requirement As of 31 December 2025

### Scope of Information Disclosure

TISCO Financial Group Public Company Limited (TISCO) discloses information under Basel III capital requirement based on the full consolidated position and in accordance with the Bank of Thailand’s notification SorNorSor 15/2562 on the regulatory disclosure requirement for consolidated financial institutions (2<sup>nd</sup> edition). The full-consolidation structure of TISCO Financial Group can be shown as follow.



\*Listed in The Stock Exchange of Thailand

However, TISCO Tokyo Leasing Co., Ltd. is not included in the consolidated financial statements since its shares are held by TISCO Group in a ratio of less than 50% of issued and paid-up shares. In addition, TISCO Group adopts a materiality concept which is consistent with accounting concept.

## Key Prudential Metrics

**Table 1 Key Prudential Metrics**

Items		31 Dec 25	31 Dec 24
<b>Capital (Unit : Million Baht)</b>			
1	Common Equity Tier I (CET1)	36,576	35,552
1A	Fully Loaded ECL CET1 <sup>1/</sup>	36,576	35,552
2	Tier I Capital	36,576	35,552
2A	Fully Loaded ECL Tier 1	36,576	35,552
3	Total Capital	40,710	38,977
3A	Fully Loaded ECL Total Capital	40,710	38,977
<b>Risk-Weighted Assets (Unit : Million Baht)</b>			
4	Total Risk-Weighted Assets (RWA)	214,612	209,127
<b>Total Capital Adequacy Ratio (%)</b>			
5	CET1 Ratio	17.04	17.00
5A	Fully Loaded ECL CET1 Ratio	17.04	17.00
6	Tier 1 Ratio	17.04	17.00
6A	Fully Loaded ECL Tier 1 Ratio	17.04	17.00
7	Total Capital Ratio	18.97	18.64
7A	Fully Loaded ECL Total Capital Ratio	18.97	18.64
<b>Capital Add-On Ratio (%)</b>			
8	Conservation Buffer Ratio	2.50	2.50
9	Countercyclical Buffer Ratio	-	-
10	Higher Loss Absorbency	-	-
11	Total Capital Add-on Ratio	2.50	2.50
12	Remaining CET1 Ratio after Minimum Total Capital Ratio Requirement <sup>2/</sup>	10.04	10.00

<sup>1/</sup> Expected Credit Loss (ECL) under The Thai Financial Reporting Standard No. 9 (TFRS 9) adoption

<sup>2/</sup> Remaining CET1 ratio after minimum total capital ratio requirement is not necessarily equal to the difference between CET1 ratio in item 5 and the minimum CET1 ratio requirement at 4.5% since CET 1 ratio might already be included in the minimum Tier 1 ratio requirement at 6% and/or the minimum total capital ratio requirement at 8.5%.

As of 1 January 2020, the amount of allowance for expected credit loss (ECL) as determined in accordance with TFRS 9: Financial Instruments was lower than the amount of allowance for doubtful accounts as of 31 December 2019 as determined in accordance with the former accounting policy by 2,113 million Baht, which had been released in quarterly basis within 2 years under straight-line method, in line with the Bank of Thailand's guideline, and was completely released at the end of 2021.

**Capital Structure**

According to the Bank of Thailand's regulation, the regulatory capital for commercial banks registered in Thailand and based on Internal Rating Based Approach (IRB) consists of Common Equity Tier 1 (CET1), Additional Tier 1, and Tier 2 Capital. CET1 capital includes paid up capital, premium (discount) on share capital and warrants, statutory reserve, reserves appropriated from net profits, net profit after appropriation, and other components following the Bank of Thailand's regulation, which are the net amount after regulatory adjustments such as goodwill and intangible assets, where Additional Tier 1 capital consists of money received from the issuance of non-cumulative preferred stocks and money received from the issuance of debts instruments that are subordinated to depositors, general creditors, and other subordinated debts of the Group, which are the net amount after regulatory adjustments such as reciprocal cross holding in the Additional Tier 1 capital of banking, financial and insurance entities.

Tier 2 capital is the sum of instruments issued by the bank which meet the criteria for inclusion in Tier 2 capital, general provision and surplus of provision, less any deduction from Tier 2 capital.

For TISCO Group, Tier 1 capital primarily comprises of paid-up share capital and cumulative profit after appropriation, while Tier 2 capital mostly consists of long-term subordinated debentures issued. Additionally, the deductions from shortage of reserve are also incorporated in Tier 1 capital.

Table 2 TISCO Financial Group's Capital Structure

Unit : Million Baht

Items	31 Dec 25	31 Dec 24
<b>1. Tier 1 Capital</b>	<b>36,576</b>	<b>35,552</b>
<b>1.1 CET 1</b>	<b>36,576</b>	<b>35,552</b>
1.1.1 Paid-up share capital	8,006	8,006
1.1.2 Premium (discount) on share capital	1,018	1,018
1.1.3 Warrants	-	-
1.1.4 Statutory reserves	801	801
1.1.5 Reserve appropriated from net profit	-	-
1.1.6 Retained earnings after appropriation	25,693	24,898
1.1.7 Other components of CET1 and disclosed reserves	1,876	1,842
1.1.8 Non-controlling interests	-	-
1.1.9 Any adjustments of CET 1	-	-
1.1.10 Deductions from CET 1 *	819	1,014
<b>1.2 Additional Tier 1</b>	<b>0.1</b>	<b>0.1</b>
1.2.1 Non-cumulative perpetual preferred stock and non-cumulative perpetual preferred stock warrants	0.1	0.1
1.2.2 Hybrid Tier 1 to be counted as Tier 1 Capital	-	-
1.2.3 Surplus (shortfall) from the issue of instruments in 1.2.1-1.2.2 where the bank receives funds	-	-
1.2.4 Eligible non-controlling interests	-	-
1.2.5 Deductions from Additional Tier 1 Capital **	-	-
<b>2. Tier 2 Capital</b>	<b>4,134</b>	<b>3,425</b>
2.1 Cumulative perpetual preferred stock and cumulative perpetual preferred stock warrants	-	-
2.2 Funds received from debt instruments subordinated to depositors and general creditors	2,900	2,640
2.3 Surplus (shortfall) from the issue of the instruments 2.1-2.2 where the bank receives funds	-	-
2.4 General provision	353	363
2.5 Surplus of provisions	881	422
2.6 Deductions from Tier 2 ****	-	-
<b>3. Total Regulatory Capital</b>	<b>40,710</b>	<b>38,977</b>

\* e.g. Net losses, goodwill, intangible assets, deferred tax assets, and shortfall of provisions

\*\* Investment in financial instruments which can be counted as Tier 1 Capital of commercial bank

\*\*\*\* Investment in financial instruments which can be counted as Tier 2 Capital of commercial bank

### Capital Adequacy under Basel III Capital Accord

Based on minimum capital requirement under Basel III effective since the beginning of 2014, TISCO Group has adopted the Internal Rating Based Approach (IRB) for regulatory capital calculation of credit risk since December 31, 2012. The IRB approach is considered more sophisticated calculation given that it can truly reflect TISCO Group risk profiles as well as assets quality with more prudent than the calculation from the Standardized Approach (SA) which is less comprehensive risk weights subject to quality of assets. The risk parameters relied on determining the capital requirement consists of Probability of Default (PD), Loss Given Default (LGD), and Exposure at Default (EAD).

Capital adequacy of the TISCO Group is still in strong position and adequate to support business expansion into the future. At the end of 2025, the regulatory capital adequacy ratio (BIS ratio) based on IRB approach stood at 18.97%, remaining higher than 11% required by the Bank of Thailand, while Tier-I capital adequacy ratio stood at 17.04%, which remained higher than the minimum requirement at 8.5%.

**Table 3 Minimum Capital Requirements for Credit Risk by Asset Classes under SA Approach**

Unit : Million Baht

<b>Credit Risk - SA</b>	<b>31 Dec 25</b>	<b>31 Dec 24</b>
<b>Performing</b>	<b>2,537</b>	<b>2,300</b>
1. Claims on Financial Institutions and Public Sector Entities treated as Claims on Financial Institutions and Securities Company	42	64
2. Claims on Corporate and Public Sector Entities treated as Claims on Corporate	805	728
3. Claims on Retail	1,490	1,268
4. Claims on Residential Property	195	239
5. Other Assets	5	2
<b>Non-performing</b>	<b>65</b>	<b>80</b>
<b>Total Minimum Capital Requirements for Credit Risk - SA</b>	<b>2,602</b>	<b>2,380</b>

**Table 4 Minimum Capital Requirements for Credit Risk by Asset Classes under IRB Approach**

Unit : Million Baht

<b>Credit Risk - IRB</b>	<b>31 Dec 25</b>	<b>31 Dec 24</b>
<b>Non-Default</b>	<b>12,624</b>	<b>12,411</b>
1. Corporate Lending	5,140	5,461
2. Retail	6,357	6,013
3. Equity Exposure	459	415
4. Other Assets	668	522
<b>Default</b>	<b>314</b>	<b>334</b>
<b>Total Minimum Capital Requirements for Credit Risk - IRB</b>	<b>12,938</b>	<b>12,744</b>

**Table 5 Minimum Capital Requirements for Equity Exposures under IRB Approach**

Unit : Million Baht

<b>Minimum Capital Requirements for Equity Exposures under IRB Approach</b>	<b>31 Dec 25</b>	<b>31 Dec 24</b>
Equity Exposure with an Exemption from IRB Calculation	459	415
<b>Total Minimum Capital Requirements for Equity Exposures under IRB Approach</b>	<b>459</b>	<b>415</b>

**Table 6 Minimum Capital Requirements for Market Risk (Standardized Approach / Internal Model Approach)**

Unit : Million Baht

<b>Minimum Capital Requirements for Market Risk</b>	<b>31 Dec 25</b>	<b>31 Dec 24</b>
Standardized Approach	139	93
Internal Model Approach	-	-
<b>Total Minimum Capital Requirements for Market Risk</b>	<b>139</b>	<b>93</b>

\* Since the transaction amount in trading book of TISCO Group was lower than the minimum thresholds required by the Bank of Thailand, the market risk capital was maintained only for the element that cover price risk of commodities related products.

**Table 7 Minimum Capital Requirements for Operational Risk**

Unit : Million Baht

<b>Minimum Capital Requirements for Operational Risk</b>	<b>31 Dec 25</b>	<b>31 Dec 24</b>
Standardized Approach	2,563	2,558
<b>Total Minimum Capital Requirements for Operational Risk</b>	<b>2,563</b>	<b>2,558</b>

**Table 8 TISCO Bank's Capital Adequacy Ratio**

Unit : %

<b>Capital Adequacy Ratio</b>	<b>31 Dec 25</b>		<b>31 Dec 24</b>	
	<b>TISCO's Capital Ratio</b>	<b>Regulatory Minimum Requirement</b>	<b>TISCO's Capital Ratio</b>	<b>Regulatory Minimum Requirement</b>
<b>1. Total Capital Adequacy Ratio</b>	<b>18.97%</b>	<b>11.00%</b>	<b>18.64%</b>	<b>11.00%</b>
2. Total Tier I Capital Adequacy Ratio	17.04%	8.50%	17.00%	8.50%
3. CET 1 Capital Adequacy Ratio	17.04%	7.00%	17.00%	7.00%

## Overview of Risk Management

Risk management of TISCO Group is centralized by consolidating all risk exposure to TISCO Financial Group as a parent company. All risk exposures are controlled and managed under the consolidated supervision principle.

Following the risk management policy of TISCO Group, TISCO places great importance on effective risk management and controls. By establishing an overall risk management framework, including policy objectives for all risk-related transactions, TISCO is able to increase awareness, accountability and efficiency in enterprise-wide risk management as well as maintain best practice standards and high-quality corporate governance. In addition, TISCO aims to maximize sustainable risk-adjusted returns over the long run.

## **Risk Management Policy**

The risk management policy of TISCO Group encompasses the following structures:

1. Consolidated and centralized risk management

Risk management infrastructure is centralized by consolidating risk exposure from all subsidiaries under TISCO Financial Group through careful risk assessment and the establishment of appropriate risk guidelines and procedures.

2. Business line accountability, independent risk oversight

Each business line is accountable for managing its own risks in the best interests of the Group while complying with risk management policies, guidelines, and procedures. Independent risk oversight and check-and-balance system have been established to ensure that risks are adequately monitored and controlled.

3. Comprehensive risk assessment

Risk assessment is performed comprehensively in all key activities. Risk assessment methodologies may range from basic approaches such as expert judgments to more advanced approaches such as quantitative and statistical analysis, depending on the size and complexity of the risks involved. These assessments are in turn supplemented by fundamental risk analysis and stress testing of extreme risk events.

4. Capital management based on standardized risk measure

Capital represents the ultimate interests of the shareholders. All risk exposures are quantified into a standardized risk measure called Risk Capital based on Value-at-Risk (VaR) concept which can relate risks to the amount of capital required to protect against them according to predefined risk limits. The process of risk assessment under Risk Capital is considered as part of Internal Capital Adequacy Assessment Process (ICAAP) of TISCO. Risk capital enables management and business line managers to understand the level of risks being taken in a meaningful manner. Risks from different levels are integrated to produce an overall risk picture of the Group, which is used for capital adequacy planning and strategic capital allocation both at the corporate and business unit level.

5. Risk tolerance level and capital allocation

The total risk capital shall not be in excess of available capital fund of the Group where qualitative risk tolerance level shall be applied for non-capital based assessment. Risk Capital shall determine the economic capital adequacy of TISCO, which the available capital is also allocated to the business and operating units such that the capital adequacies to undertaken risk are ensured both at the corporate- and business-unit-level.

6. Adequate return for risk and risk-adjusted performance management

To promote shareholder value creation, risk components are incorporated into business performance measurements with the objective of maximizing risk-adjusted returns for shareholders. Product pricing takes into account varying risks to ensure overall profitability. Business expansion is advocated in the areas where marginal risk-adjusted returns are in excess of the marginal risks.

7. Portfolio management, diversification and hedging

Risk diversification is a key risk management principle in all business activities. Diversification is considered and adopted by management and business line managers both at the portfolio and transaction levels as an effective approach to reducing the aggregate level of risks in accordance with certain guidelines and limits.

8. Strong risk awareness culture

Awareness and understanding of risks and risk management are important for the accountability of risk management. Business heads are expected to have a high degree of awareness and understanding of the risks in their accountable areas and how they contribute to the overall risk of the corporate as a whole.

9. Effective risk modeling and validation

Risks shall be modeled as forward-looking measures that reflect potential likelihood and impact on the intrinsic value of TISCO assets, liabilities, or businesses. Mark-to-market practice shall be adopted in all portfolios as appropriate, where independent validation from risk management shall be adopted in the case of high complexity in valuation. Key risk models with sufficient information shall be validated through a systematic back-testing process or other prudent statistical tools.

10. Regulatory best practice

TISCO Group has adopted risk management policies and guidelines that comply with all regulations and best practice standards of the Bank of Thailand (BOT), the Securities and Exchange Commission (SEC) and other regulatory authorities.

11. New Business or Product

All new businesses or products shall be approved by the portfolio risk authority and relevant specific-area risk authority according to the procedure outlined in the risk management guideline. New business or product will be evaluated in terms of its risk-reward characteristics, the contributions to the overall corporate risk profile, and the consistency with corporate capital capacity.

12. Related Party Transaction

All business transactions among TISCO Group and related party shall be on a similar basis with same treatment of regular customers. Additionally, the related transaction shall be transparent and auditable. Meanwhile, the proportion of business transactions among TISCO Group shall be controlled under regulatory guideline.

13. Stress Testing

Stress testing is a procedure to assess the impact on the company's financial status under extreme risk events. Stress testing process is designed to be as a supplementary tool for the analysis of credit risk, market risk and funding risk. Risk Management Committee is responsible to oversee the framework for stress tests. The Committee will establish guidelines and key required assumptions to perform stress tests based on the appropriate framework. Meanwhile, Risk Management Functions are responsible to facilitate all related business units in order to perform periodically stress tests, and report the stress testing results as well as the recommendations on any important aspects to the Risk Oversight Committee as well as the Risk Management Committee. Stress testing assessment and results shall be integrated to setting and evaluating the internal management strategy which may involve reviewing the need for limit changes or developing contingency plans.

#### 14. Risk Management for Foreign Exposures

Risk from foreign exposures arises from changes in the value of foreign exposures due to country-specific sovereign and economic conditions including political risk and capital flow risk. TISCO Group shall ensure that credit granting or investment activities in foreign countries are carried out in alignment with business strategy and well-controlled within the manageable level. The risk management of foreign exposures shall take into account the monitoring of economic and political risk factors that may adversely affect the value of foreign exposure position, as well as the country-specific liquidity, market and correlation risks. In case the foreign exposures are substantial and exceeding the threshold limit of 50% of regulatory Tier-I capital, TISCO Group will establish the detailed guidelines for managing foreign exposure risks in accordance with the BOT's regulation.

#### 15. Policy for Recovery Plan

According to the past global financial crisis, it demonstrated the necessity for the financial institutions to be prepared to deal with financial distress. Development of a recovery plan is the preparation of mechanism in advance to deal with potential stress condition that may arise in the future to ensure that commercial banks have a framework that may be adapted as appropriate to the circumstances at the time of actual stress. The recovery plan shall at least cover key processes and provide necessary information as set out in the BOT's guideline on Recovery Planning. The plan includes a set of tools and procedures to enable the recovery or continuation of TISCO Group under extreme risk events. The Board of Directors through the Executive Board and Risk Oversight Committee oversee the recovery plan framework, whereby the Risk Management Committee formulates the recovery plan with support from the Enterprise Risk Management function in facilitating all related business units, consolidating all necessary information, and defining appropriate recovery trigger and recovery option in according with possible economic condition and market environment. Moreover, the Recovery Plan will be reviewed at least once a year or when there is a material change that may affect the recovery plan and the effective implementation of recovery options. The recovery trigger event result and option in the recovery plan will be reviewed by the Risk Oversight Committee and approved by the Executive Board.

### **Risk Management Framework**

In accordance with enterprise-wide risk management policies and objectives, risk management and internal control have been monitored and controlled by the Board of Directors of the Company with the delegation to the Executive Board of Directors of the Company. An effective management process has been established for assessing and managing all firm-wide risk exposures at both the portfolio and transactional levels to ensure the financial soundness and safety of TISCO Group. Senior management and relevant business advisory committees oversee the entire risk management framework and strategy for all business areas supported by planning and budgeting function. The Risk Oversight Committee is set up to advise the Board of Directors on risk governance framework to ensure that top management and heads of risk management functions follow the risk management policy, strategies, and risk appetites, as well as to ensure that capital and liquidity management strategies are consistent with the risk appetites. The Risk Oversight Committee also reviews the sufficiency and effectiveness of overall risk management policy and

strategies, and reports risk exposures, effectiveness of risk management system and risk governance culture of the organization, as well as any significant factors or required improvement to the Board of Directors, and advises or participates in evaluation of heads of risk management functions. Moreover, the Risk Management Committee, supported by enterprise risk management, risk analytics & advisory, IT risk management, and operational risk management functions, is set up to oversee that enterprise-wide risk management of the group is undertaken according to the same standard.

Specific-area risk authorities are then established to manage in-depth, transaction-level risks in each particular area, such as the Credit Committee, Problem Loan Committee, and Compliance & Operation Control Committee. These mechanisms are in turn supported by the credit control and other supporting functions, governing compliance, and legal office. Business lines are fully accountable for managing their own risks within the policy guidelines established by the Risk Management Committee and specific-area risk authorities. All the business operations are under the risk limit approved by the Risk Management Committee including new business analysis in each business line, where risk limits triggered as well as new businesses shall be reported monthly to the Risk Management Committee for acknowledgement. Additionally, the Risk Oversight Committee shall review the sufficiency and effectiveness of overall risk management policy and strategies, and reports risk exposures, effectiveness of risk management system and risk governance culture of the organization, as well as any significant factors or required improvement to the Board of Directors, and advises or participates in evaluation of heads of risk management functions. However, to enhance the overall risk management system, the risk management system shall be audited and reported to the Audit Committee which directly reports to the Board of Directors.

In the present, Information Technology (IT) is involved as integral part of business to serve business needs and being customer channels to access information and services as known as Financial Technology (FinTech), in addition to several laws and regulations which have been announced for IT good governance. TISCO Group has IT Risk Management function to manage in-depth and transaction-level of IT risks and to support the Risk Oversight Committee as well as the Risk Management Committee regarding to IT risk as integral part of operational risk and IT Risk Committee in specific-area risk authorities.

The roles and responsibilities of the relevant committees and risk management authorities are described as follows:

- Board of Directors

The Board of Directors of the Company shall ensure the institution of effective risk management system of the Bank and ensure that the Company has adopted and adhere to TISCO Group Risk Management Policy. The Board appoints the Executive Board for managing and monitoring of risk activities while also delegates the authority of overseeing risk management activity to the Risk Oversight Committee. This is achieved by setting risk limits and risk appetites and ensuring the establishment of effective risk management systems and procedures in accordance with the standard practices of risk identification, assessment, monitoring and control, all of which are in line with Risk management guideline and risk limit oversight by the Risk Oversight Committee.

- Risk Oversight Committee

The Risk Oversight Committee is set up to advise the Board of Directors on risk governance framework to ensure that top management and heads of risk management functions follow the Board of Directors' approved risk management policy, strategies, and risk appetites, as well as to ensure that capital and liquidity management strategies are consistent with the approved risk appetites. Moreover, the Risk Oversight Committee has responsibilities on reviewing sufficiency and effectiveness of overall risk management policy and strategies as well as risk appetites, at least once a year or when there is significant change. The Committee also reports on risk exposures, effectiveness of risk management system and risk governance culture of the organization, as well as any significant factors or required improvement to the Board of Directors, and advises or participates in evaluation of heads of risk management functions.

- Risk Management Committee

The Risk Management Committee of the company, comprising the senior managements from the TISCO Group, has been appointed by the Group CEO in charge of the formulation and implementation of enterprise-wide risk strategies and action plans in connection with risk management policies and guidelines. The Risk Management Committee meeting is regularly held once a month. Enterprise risk management, risk analytics & advisory, operational risk management, and IT risk management functions support the Risk Management Committee in setting up and monitoring risk management policies and guidelines and performing enterprise-wide risk management activities through research, assessment, and reporting process.

- IT Risk Committee

IT Risk Committee is appointed by Group CEO to determine IT Risk Management Policies and to oversee IT risk management activities and key risk indicators for effectiveness of IT risk management processes and IT compliance with laws and regulations across TISCO Group.

- Specific-Area Risk Authorities

Specific-area risk authorities are set up to address in-depth risk management and controls at the transaction level. Key specific-area risk authorities include the Credit Committee and Problem Loan Committees, which are in turn supported by the credit control in overseeing credit approval and risk management. In addition, Executive board of Directors of the bank and Board of Directors of other credit-granting subsidiaries shall control and follow up all specific risk areas which are directly reported to the Board of Directors of the bank as well as the Board of Directors of the company on a regular basis.

- Board of Directors of Subsidiaries

Under consolidated supervision framework, the Board shall ensure that each subsidiary adopt and adhere to TISCO Group Risk Management Policy approved by the Board of Directors of the parent company. The Board will appoint other committees according to the needs and suitability to carry out specific tasks to ensure that the operations are in compliance with established Corporate Governance Policy and report risk management activities and financial performance to the parent company's Executive Board on a regular basis, in compliance with the Consolidated Supervision Principle of the BOT.

### **Roles and Responsibilities of Internal Audit**

The Audit Committee of TISCO Financial Group independently reviews the assessment of the adequacy of the TISCO Group's internal control system, as annually prepared by the Executive Board, in

relation to the group's risks, and also reviews the policy and guidelines for internal audit as well as for the Compliance Committee and the Audit Committee of other subsidiaries to ensure that financial statement reports are transparent and accurate. The committee also effectively assesses that all business operations have adequate internal controls and are in compliance with laws and regulations, and reports the key issues to the Board of Directors of TISCO Financial Group for consideration. For other subsidiaries under the supervision of regulators, the Audit Committee, internal control and internal audit reporting process have been established in each company. The committee also effectively assesses that all business operations have adequate internal controls and are in compliance with laws and regulations.

The Internal Audit function is responsible for regular auditing of business operations in compliance with policies and guidelines, and reporting to the Audit Committee. Internal Audit also coordinates with management and relevant business units to improve the effectiveness of internal control systems.

### **Credit Risk**

Credit Risk is defined as the possibility of an obligor's failure to meet the terms of any contract with TISCO as agreed or by defaulting on a loan agreement. Credit risk, if it occurs without pledged assets, requires the Bank to maintain higher provisions for expected credit loss, which will then adversely affect net income and TISCO Group's capital.

- **Credit Risk Management Framework**

The Risk Management Committee is delegated to oversee credit risk management of the corporate portfolio. The committee is responsible for formulating credit risk strategies and establishing guidelines and limits, as well as advising other credit risk authorities and retaining accountability on related issues. It also monitors and reviews credit risks at the portfolio level and reports essential credit risk information to the Board. In addition, the Risk Oversight Committee shall advise the Board of Directors on risk governance framework to ensure that top management and heads of risk management functions follow the Board of Directors' approved risk management policy, strategies, and risk appetites, while reviewing sufficiency and effectiveness of overall risk management policy and strategies. The Risk Oversight Committee shall also report on risk exposures, effectiveness of risk management system and risk governance culture of the organization, as well as any significant factors or required improvement to the Board of Directors, and advises or participates in evaluation of heads of risk management functions.

Credit risk is mainly incurred from subsidiary companies, in which conducting loan as main business. Specific-Area credit risk authorities include the Credit Committee, and Problem Loan Committee, which are established to oversee credit risk management and control at in-depth transaction level of subsidiary companies. The Credit Committee is responsible for reviewing and granting credit approvals to any single client proposed by lending officers. The Credit Committee may delegate its authority to designated persons for authorizing lower-risk transactions. The Problem Loan Committee was set up to monitor and follow up overdue payment of problem loan accounts and foreclosed assets on a regular basis.

Sound credit risk assessments are key risk practices at TISCO Group such as credit analysis, credit rating, delinquency analysis, concentration level and risk capital. All loan originations must operate under a

sound credit granting process in which an effective credit rating system is employed in key business area. In retail lending area, quantitative-oriented approaches to credit grading are implemented, considering its homogenous high-volume characteristics, with emphasis on the use of extensive data mining and analysis. In corporate lending area, qualitative-oriented credit grading approaches shall be employed, taking into account its highly varying risk profiles, with well-defined standard. The credit rating for capital calculation also based on the issuer ratings assigned by credit rating agencies, i.e., Standard & Poor's, Moody's Investors Service, Fitch Ratings, Fitch Ratings Thailand and TRIS Rating.

Concentration risks are also essential in credit portfolio risk management. Appropriate guidelines on concentration risks are set up considering appropriate business practice and company risk capital capacity.

TISCO Group uses credit risk management guidelines and limits that are comprehensively applied to all credit-related functions both at the portfolio and transactional levels, as well as monitoring and managing problem loan and foreclosed assets. Credit risk factors are explained in detail as follows:

### **1. Default Risk**

#### *Definition of Default*

Whenever one or both of the following events occur, a default is determined:

(1) TISCO deems that debtors are unable to repay fully according to the credit obligations, without consideration on payment that may receive from collateral. The following events constitute the debtor is unlikely to pay:

(1.1) TISCO stop accrue interests of debtor

(1.2) TISCO write-off or sets additional provisions as it deems that debtor is unable to repay or credit quality of debtor significantly deteriorates

(1.3) TISCO have sold the credit obligation at a material credit-related economic loss.

(1.4) TISCO consent to a debt restructuring by material forgiveness or postponing principal, interest or fees as it deems that financial condition of debtor deteriorates

(1.5) TISCO have filed litigation against debtor

(1.6) Debtor has filed for protection under Bankruptcy law or other creditors have file bankruptcy against debtor, therefore delaying debt repayment to TISCO or

(2) Debtor has more than 90-day past due (principal or interest), or debtor is classified as substandard or lower according to the Notification of the Bank of Thailand Re: Criteria for Assets Classification and Provision of Commercial Bank.

TISCO has prudently managed non-performing loans (NPLs) with effective risk management tools and stringent practice of loan collection, debt restructuring and write-off process. TISCO has applied Collective Approach for loan loss provisioning to the car hire-purchase portfolio. The loan loss reserve was derived from the best estimate of expected credit losses from the portfolio over the next 12 months, based historical loss data incorporating with adjustment for the forecasted economic condition. Loan loss reserve of TISCO consists of specific reserve for classified loan and general reserve reflecting the prudent provisioning policy to mitigate potential risk.

## **2. Concentration Risk**

Most of TISCO portfolio consists of hire purchase portfolio, of which concentration is very low. For the commercial loan portfolio, it was diversified into three different sectors: manufacturing and commerce, real estate and construction, and public utilities and services. There is slight concentration in real estate sector which has been managed under risk management procedure. However, commercial loan portfolios are almost fully collateralized. In loan approval process, appropriate proportion of collateral value and financing amount is maintained to ensure that risks were kept within a manageable level. Additionally, collateral values will be regularly appraised, and effective loan drawdown procedure has been implemented. Portfolio credit quality was closely monitored.

## **3. Collateral Risk**

Most of the total lending portfolio in TISCO was asset backed or with collateral. For the hire purchase portfolio, the underlying asset under the loan agreement itself is still owned by TISCO. In case the borrowers of hire purchase loans cannot meet the terms and conditions, TISCO can follow up and seize the underlying assets immediately. After repossession, the process of asset liquidation can be completed within 3-5 months.

A major risk factor in the hire purchase business depends on the market value of used cars. A substantial decrease in the market value of a used vehicle results in credit loss, which directly affects the net income and capital of TISCO. Market prices for used cars depend on such diverse factors as market demand, type, brand and tax regulations.

However, judging by past records, the recovery rate for asset liquidation in the secondary market was somewhat high at 70-90% of the remaining net financing amount, which helped in absorbing losses from defaulted loans. TISCO has attempted to minimize credit risk by regularly updating its information regarding trends in the used car market, requiring high-value collateral, sufficient down payment, and favoring well-known brands in the secondary market.

For commercial and mortgage loans, most collateral extended as loan guarantees was in the form of real estate, of which the value could be deducted for the purposes of expected credit loss provisioning. Collateral values were appraised according to the Bank of Thailand's rules and regulations. Generally, the risk of real estate value changes depends on economic conditions. A recession in the Thai economy might result in lower values, which would require TISCO to reserve higher provision for expected credit loss. Moreover, the legal process of collateral acquisition through related laws and enforcement is both costly and time consuming. However, all pending cases are closely monitored on a regular basis.

## **4. Property Risk from Foreclosed Assets**

Property risk from foreclosed assets is the impairment of assets transferred from loans, hire purchase receivable on which debtors had defaulted on their repayment obligations under the loan contracts or restructured receivables.

### *Definition of Assets Impairment*

Impairment of Assets means an exceeding of the carrying amount of an asset over its recoverable amount. TISCO assesses at each reporting date whether there is an indication that an asset may be

impaired. If any indication exists, or when annual impairment testing for an asset is required, TISCO estimates the asset’s recoverable amount. An asset’s recoverable amount is the higher of an asset’s fair value less costs to sell and its value in use. Where the carrying amount of an asset exceeds its recoverable amount, the asset is considered impaired and is written down to its recoverable amount. In assessing value in use, the estimated future cash flows are discounted to their present value using a pre-tax discount rate that reflects current market assessments of the time value of money and the risks specific to the asset. In determining fair value less costs to sell, an appropriate valuation model is used. These calculations are corroborated by a valuation model that based on information available, reflects the amount that TISCO could obtain from the disposal of the asset in an arm’s length transaction between knowledgeable, willing parties, after deducting the costs of disposal.

Impairment losses are recognized in the income statement. For assets other than goodwill, an assessment is made at each reporting date as to whether there is any indication that previously recognized impairment losses may no longer exist or may have decreased. If such indication exists, TISCO estimates the asset’s recoverable amount. An impairment loss recognized in prior periods for an asset other than goodwill shall be reversed.

**Credit Risk Exposures under Standardized Approach (SA)**

In order to maintain the minimum capital requirement under Standardized Approach, External Credit Assessment Institution Rating (ECAI) has been applied for the corporate portfolio in 2010 in order to better reflect risk of client comparing with the risk weight of 100% has been applied for all TISCO corporate loans.

**Credit Risk Exposures under Internal Rating Based Approach**

***Internal Rating Based (IRB) Phase Rollout***

As Basel II capital requirement has been effective since the end of June 2010, TISCO Group has adopted standardized approach (SA) for credit risk capital calculation in the first year and has been permitted from Bank of Thailand to rollout internal rating based approach (IRB) for credit risk capital calculation from the period of December 31, 2012. The detail of phase rollout plan which is approved from Bank of Thailand is as follow.

<b>Credit Portfolio</b>	<b>Implementation Period</b>
1. Hire Purchase Portfolio	Period of 31 December 2009
2. Corporate Loan Portfolio	Period of 31 December 2012
3. Auto Cash Portfolio	Period of 31 January 2016
4. Floor Plan Financing	Period of 31 January 2017
5. SME Loan Portfolio	Period of 31 December 2020

**Scope of Internal Rating System Implementation**

TISCO Group has adopted IRB approach for the calculation of credit risk-weighted assets for hire purchase portfolio which is the major portfolio of TISCO Group since the period of 31 December 2009. The

credit scoring systems are developed from statistical modeling and validated performance by independent unit.

TISCO Group regularly performs the credit scoring model validation process on a quarterly basis to ensure the performance and consistency of the scoring system, regarding to the market environment and risk characteristics of current customers. The validation result is reported to the Risk Management Committee.

The credit grades resulting from the credit scoring models shall be used in credit risk-weighted assets following IRB approach. Moreover, the credit grades shall also be used in the credit approval process, portfolio performance monitoring, expected credit loss provisioning and business strategic planning.

Furthermore, TISCO Group has also adopted foundation IRB approach for the calculation of credit risk-weighted assets for corporate loan portfolio since the period of 31 December 2012. The credit rating systems are developed from the cooperation of Credit Analyst and Risk Management functions and validated performance by independent unit.

TISCO Group regularly performs the validation process of corporate credit rating model on an annual basis to ensure the integrity and consistency of rating system, regarding to the economic situation and firm-specific risk of current customers. The validation result is reported to the Risk Management Committee.

The credit ratings resulting from the credit rating models shall be used in credit risk-weighted assets, employed the IRB function under Basel III. Additionally, the credit ratings shall also be used as the supplementary tool for the credit approval process, portfolio performance monitoring and business strategic planning.

For year 2016, TISCO Group has adopted IRB approach for the calculation of credit risk-weighted assets for auto cash portfolio since the period of 31 January 2016. The credit scoring systems are developed following the frameworks as used in hire purchase portfolio. The credit scoring model validation process is performed on a quarterly basis and the validation result is reported to Risk Management Committee.

Moreover, TISCO Group has adopted IRB approach for the calculation of credit risk-weighted assets for Floor Plan Financing since the period of 31 January 2017 where the credit rating systems are developed in accordance with the frameworks as used in corporate loan portfolio. And since the period of 31 December 2020, the Bank has adopted IRB approach for the calculation of credit risk-weighted assets for SME loan where the credit rating systems are also developed in accordance with the frameworks as used in corporate loan portfolio.

The credit grades resulting from the credit scoring models shall be used in credit risk-weighted assets following IRB approach. Moreover, the credit grades shall also be used in the credit approval process, portfolio performance monitoring, expected credit loss provisioning and business strategic planning.

### **Internal Rating Structure**

Hire purchase and auto cash portfolios are retail credit portfolio which is managed as a portfolio pool. The credit scoring system is developed as a tool for portfolio management. The internal credit scorings for hire purchase and auto cash businesses comprise of two main scoring systems which are Application

Credit Scoring to be used in loan origination process, and Behavior Credit Scoring to assess and monitor portfolio quality, maintain provision for expected credit loss, and calculate credit risk-weighted assets.

In the loan origination process, customer shall be generated the credit score and corresponding credit grade based on the customer's characteristics data, combined with requested loan facilities. Meanwhile, the customer's payment behavior shall be incorporated with customer characteristics and loan facilities to produce credit score and corresponding credit grade for portfolio monitoring and credit risk-weighted asset calculation. The behavior credit scoring system is classified into two major groups which are non-defaulted group and defaulted group. For non-defaulted group including Pass and Special Mention loan, credit grade of can be divided into 12 grades from 1 to 12 for hire purchase portfolio and divided into 8 grades from 1 to 8 for auto cash portfolio where an obligor of loan has credit worthiness and payment behavior to meet its financial commitments respectively from exceptional credit to poor credit, while for defaulted group including Sub-standard Doubtful and Doubt to Loss loan, credit grade can be divided into N2 which represents defaulted accounts with 4-6 overdue installments and N3 which represents defaulted accounts with overdue installments greater than 6.

Corporate loan, Floor Plan Financing, and SME loan portfolios are managed under the individual basis and the credit rating is applied to large corporate client applying all loan which portfolio managed based on individual client treatment. The internal credit rating for corporate loan portfolio comprises of two main rating systems which are Corporate Credit Rating to be applied to all corporate clients, and Specialized Credit Rating to be applied to the entity associated with the financing of individual projects where the repayment is highly dependent on the performance of the underlying collateral. Both Corporate and Specialized Credit Ratings shall be used in loan origination process and to monitor portfolio quality, and calculate credit risk-weighted assets.

For corporate credit rating, for non-defaulted group, the credit rating can be divided into 7 ratings from A1 to A7 where an obligor of loan has credit worthiness and payment behavior to meet its financial commitments respectively from exceptional credit to poor credit. Meanwhile, the credit rating of non-defaulted group under specialized credit rating can be divided into 4 ratings from S1 to S4 following the definition under the supervisory slotting criteria published by Bank of Thailand. The credit rating of floor plan financing is divided into 7 ratings, from FP1 to FP7 where an obligor of loan has credit worthiness and payment behavior to meet its financial commitments respectively from exceptional credit to poor credit. For SME loan portfolio apart from hire purchase and inventory financing, the SME credit rating shall be used where the credit rating is divided into 7 ratings, from B1 to B7 where an obligor of loan has credit worthiness and payment behavior to meet its financial commitments respectively from exceptional credit to poor credit, while SME floor plan loan that applies for other credit lines shall refer to the credit rating of floor plan financing. Meanwhile, there are credit ratings for default group of both corporate and specialized credit ratings as well as floor plan and SME loan credit ratings.

### **Rating Assignment Process**

For rating assignment of hire purchase and auto cash customers in credit approval process, customers shall be generated the credit score and corresponding credit grade based on the application credit

scoring model through the loan origination system. Loan approval procedure and credit result is primarily based on credit grade results by loan origination system. For rating assignment to use in portfolio monitoring, expected credit loss provisioning and the calculation of credit risk-weighted asset, customers shall be generated credit score and corresponding credit grade based on the payment behavior using behavior credit scoring model.

For portfolio monitoring and provisioning, all hire purchase and auto cash customers shall be managed as a portfolio pool under the same management framework and credit scoring model. However, the hire purchase and auto cash customers, which are applied IRB approach to calculate credit risk-weighted assets using behavior credit scoring model, must be complied with the Bank of Thailand's definition of retail exposures. For hire purchase and auto cash, customers who are not qualified to the definition of retail exposures under IRB approach shall be adopted standardized approach (SA) for the calculation of credit risk-weighted assets.

For rating assignment of corporate loan, floor plan financing and SME loan customers, the credit rating shall be generated to the customer as a part of credit analysis process as done by the credit analysts. The corporate loan, floor plan financing and SME loan customers which are applied IRB approach to calculate credit risk-weighted assets must be assigned the credit rating. The customers who are not required to be assigned the credit rating as defined regarding to the internal guideline shall be adopted standardized approach (SA) for the calculation of risk-weighted assets.

### **PD and LGD Estimation and Validation**

TISCO Group clearly defines the definition of defaulted account for hire purchase and auto cash portfolios which is the account with overdue more than 3 installments or 90 days, repossessed account and legal account. Moreover, the definition of defaulted account also includes the account which classified as credit impaired financial assets according to the Bank of Thailand's notification.

For the estimation of Probability of Default (PDs) of hire purchase and auto cash portfolios, PD estimates are the long-term average of the historical one-year default rates and adding by a volatility rate of historical default rates as a margin of conservatism. The data range of historical one-year default rates used for PD estimation must be covered at least 5 years.

For the estimation of Loss Given Default (LGDs) of hire purchase and auto cash portfolios, LGD estimates must be the worst loss that can be happened under the worst but potential business environment under the sufficient conservative confidence level. The LGD estimates are derived based on the historical loss rates with the range of data to be at least 5 years.

PD and LGD estimates of hire purchase and auto cash portfolios must be regularly validated on a quarterly basis. The estimates are validated through back-testing by comparing the estimates of each reporting period with the actual default rate and loss rate occurred in that reporting period.

For the validation of PD estimates, TISCO considers if the actual default rates are greater than the PD estimates, exceeding the acceptable limit. Should the back-testing result exceed the defined limit, PD estimates shall be reviewed accordingly.

For the validation of LGD estimates, the actual loss rate shall not exceed the LGD estimates. Should the actual loss rate exceeded LGD estimates, the LGDs shall be reviewed immediately.

For corporate loan, floor plan financing, and SME loan portfolios, the definition of defaulted account is defined as the client classified in credit impaired financial assets according to the Bank of Thailand's notification. Furthermore, the definition of default client also includes the restructured client whose lending terms has been modified because of deterioration in the financial condition to reduce and renegotiate its delinquent debts in order to improve or restore liquidity and rehabilitate so that it can continue its operations.

Due to the low defaulted client data availability of corporate loan portfolio of TISCO Group, the statistical method for low default portfolio that can be used to estimate long run PDs with the conservative buffer under the limitation of the available default data has been adopted to estimate PDs with conservative cushion.

For the estimation of LGDs of corporate loan, floor plan financing as well as SME loan portfolios, TISCO Group has adopted the foundation IRB approach to calculate the risk-weighted assets. Thus, the LGDs used in the calculation must be the standard LGDs provided by the Bank of Thailand.

PD estimates of corporate loan, floor plan financing and SME loan portfolios must be regularly validated on an annual basis. The estimates are validated through back-testing by comparing the average portfolio PD of each reporting period with the actual default for the portfolio that occurred in that reporting period. The PD estimates, and credit rating systems if needed, shall be reviewed if the actual default rate of the portfolio is greater than the average portfolio PD, exceeding the acceptable limit.

**Table 9 Assets Exposures and Off Balance Sheet Items before Credit Risk Mitigation**

Unit : Million Baht

Items	31 Dec 25	31 Dec 24
<b>1. Assets Exposures</b>	<b>276,329</b>	<b>269,924</b>
1.1 Total Net Loan (Including Accrued Interest) <sup>1/</sup>	265,575	261,812
1.2 Net Fixed Income Investment <sup>2/</sup>	7,310	4,495
1.3 Deposits (Including Accrued Interest) <sup>3/</sup>	3,352	3,560
1.4 Derivatives	91	56
<b>2. Off Balance Sheet Items <sup>4/</sup></b>	<b>9,983</b>	<b>12,529</b>
2.1 Aval and Guarantee	1,848	3,169
2.2 OTC Derivative <sup>5/</sup>	2,845	2,771
2.3 Undrawn Committed Line	5,291	6,588

<sup>1/</sup> Including accrued interest and after netting of unearned income, profit (loss) from changing new conditions, allowance for expected credit loss, and including loan and accrued interest of interbank and money market

<sup>2/</sup> Not including accrued interest and after netting of impairment

<sup>3/</sup> Including accrued interest and allowance for expected credit loss

<sup>4/</sup> Before credit conversion factor

<sup>5/</sup> Including equity derivatives

**Table 10 Assets Exposures and Off Balance Sheet Items before Credit Risk Mitigation Classified by Country or Region**

31 Dec 25

Unit : Million Baht

Country or Region	Assets Exposures					Off Balance Sheet Items <sup>4/</sup>			
	Total	Total Net Loan (Including Accrued Interest) <sup>1/</sup>	Net Fixed Income Investment <sup>2/</sup>	Net Deposits (Including Accrued Interest) <sup>3/</sup>	Derivatives	Total	Aval and Guarantee	OTC Derivative <sup>5/</sup>	Undrawn Committed Line
Thailand	<b>266,122</b>	255,770	7,310	2,951	91	<b>9,983</b>	1,848	2,845	5,291
Asia Pacific (excluding Thailand)	<b>10,196</b>	9,795	-	401	-	-	-	-	-
North America and Latin America	<b>1</b>	1	-	-	-	-	-	-	-
Africa and Middle East	<b>2</b>	2	-	-	-	-	-	-	-
Europe	<b>7</b>	7	-	-	-	-	-	-	-
<b>TOTAL</b>	<b>276,329</b>	<b>265,575</b>	<b>7,310</b>	<b>3,352</b>	<b>91</b>	<b>9,983</b>	<b>1,848</b>	<b>2,845</b>	<b>5,291</b>

31 Dec 24

Unit : Million Baht

Country or Region	Assets Exposures					Off Balance Sheet Items <sup>4/</sup>			
	Total	Total Net Loan (Including Accrued Interest) <sup>1/</sup>	Net Fixed Income Investment <sup>2/</sup>	Net Deposits (Including Accrued Interest) <sup>3/</sup>	Derivatives	Total	Aval and Guarantee	OTC Derivative <sup>5/</sup>	Undrawn Committed Line
Thailand	<b>260,066</b>	252,355	4,495	3,159	56	<b>12,529</b>	3,169	2,771	6,588
Asia Pacific (excluding Thailand)	<b>9,851</b>	9,450	-	401	-	-	-	-	-
North America and Latin America	<b>1</b>	1	-	-	-	-	-	-	-
Africa and Middle East	<b>2</b>	2	-	-	-	-	-	-	-
Europe	<b>5</b>	5	-	-	-	-	-	-	-
<b>TOTAL</b>	<b>269,924</b>	<b>261,812</b>	<b>4,495</b>	<b>3,560</b>	<b>56</b>	<b>12,529</b>	<b>3,169</b>	<b>2,771</b>	<b>6,588</b>

<sup>1/</sup> Including accrued interest and after netting of unearned income, profit (loss) from changing new conditions, and allowance for expected credit loss, and including loan and accrued interest of interbank and money market

<sup>2/</sup> Not including accrued interest and after netting of impairment

<sup>3/</sup> Including accrued interest and allowance for expected credit loss

<sup>4/</sup> Before credit conversion factor

<sup>5/</sup> Including equity derivatives

**Table 11 Assets Exposures and Off Balance Sheet Items before Credit Risk Mitigation Classified by Remaining Maturity**

Unit : Million Baht

Items	31 Dec 25			31 Dec 24		
	≤ 1 Year	> 1 Year	Total	≤ 1 Year	> 1 Year	Total
<b>1. Assets Exposures</b>			<b>276,329</b>			<b>269,924</b>
1.1 Total Net Loan (Including Accrued Interest) <sup>1/</sup>	43,764	221,810	<b>265,575</b>	41,603	220,209	<b>261,812</b>
1.2 Net Fixed Income Investment <sup>2/</sup>	7,309	1	<b>7,310</b>	4,494	1	<b>4,495</b>
1.3 Deposits (Including Accrued Interest) <sup>3/</sup>	3,341	11	<b>3,352</b>	3,216	344	<b>3,560</b>
1.4 Derivatives	91	-	<b>91</b>	56	-	<b>56</b>
<b>2. Off Balance Sheet Items<sup>4/</sup></b>			<b>9,983</b>			<b>12,529</b>
2.1 Aval and Guarantee	883	964	<b>1,848</b>	515	2,654	<b>3,169</b>
2.2 OTC Derivative <sup>5/</sup>	2,845	-	<b>2,845</b>	2,771	-	<b>2,771</b>
2.3 Undrawn Committed Line	395	4,896	<b>5,291</b>	158	6,430	<b>6,588</b>

<sup>1/</sup> Including accrued interest and after netting of unearned income, profit (loss) from changing new conditions, and allowance for expected credit loss, and including loan and accrued interest of interbank and money market

<sup>2/</sup> Not including accrued interest and after netting of impairment

<sup>3/</sup> Including accrued interest and allowance for expected credit loss

<sup>4/</sup> Before credit conversion factor

<sup>5/</sup> Including equity derivatives

**Table 12 Exposures of Financial Instruments\* before Credit Risk Mitigation and General provision and Specific provision**

31 Dec 25

Unit : Million Baht

Items	Exposures		Total Provision <sup>2/</sup>	Provision <sup>2/</sup> under SA Approach		Provision <sup>2/</sup> under IRB Approach	Net Exposure <sup>3/</sup>
	Defaulted exposures <sup>1/</sup>	Non-defaulted exposures <sup>1/</sup>		General provision	Specific provision		
1. Total Net Loan (Including Accrued Interest) <sup>4/</sup>	5,670	269,148	9,244	233	1,797	7,210	265,575
2. Net Fixed Income Investment <sup>5/</sup>	241	7,069	-	-	-	-	7,310
3. Deposits (Including Accrued Interest) <sup>6/</sup>	-	6,714	3,361	-	3,361	-	3,352
4. Loan commitment and Financial Guarantee contract <sup>7/</sup>	-	8,125	986	-	0.0	986	7,138
<b>Total</b>	<b>5,912</b>	<b>291,055</b>	<b>13,591</b>	<b>233</b>	<b>5,158</b>	<b>8,196</b>	<b>283,376</b>

31 Dec 24

Unit : Million Baht

Items	Exposures		Total Provision <sup>2/</sup>	Provision <sup>2/</sup> under SA Approach		Provision <sup>2/</sup> under IRB Approach	Net Exposure <sup>3/</sup>
	Defaulted exposures <sup>1/</sup>	Non-defaulted exposures <sup>1/</sup>		General provision	Specific provision		
1. Total Net Loan (Including Accrued Interest) <sup>4/</sup>	5,759	264,540	8,486	274	1,567	6,616	261,812
2. Net Fixed Income Investment <sup>5/</sup>	211	4,285	-	-	-	-	4,495
3. Deposits (Including Accrued Interest) <sup>6/</sup>	-	3,569	9	-	9	-	3,560
4. Loan commitment and Financial Guarantee contract <sup>7/</sup>	-	9,850	92	-	0.2	92	9,758
<b>Total</b>	<b>5,970</b>	<b>282,243</b>	<b>8,587</b>	<b>274</b>	<b>1,576</b>	<b>6,708</b>	<b>279,626</b>



## TISCO FINANCIAL GROUP PUBLIC COMPANY LIMITED

\* Only financial instruments that are subjected to recognizing impairment in accordance with the Thai Financial Reporting Standard No. 9 (TFRS 9) - "Financial Instruments" of the Federation of Accounting Professions

\*\* General provision as defined by the BOT's Regulation on Components of Capital for Commercial Banks, which included provision for financial assets and contingents that have no significant increase in credit risk (performing) as well as those that have significant increase in credit risk (under-performing), but not included general provisions that are already counted as specific provision

<sup>1/</sup> Depending on the method used by the commercial banks (1) SA: Non-performing and Performing exposures (2) IRB: Defaulted and Non-defaulted exposures. The non-performing / defaulted exposures shall apply the same BOT's loan classification and provisioning guidelines as applied for credit-impaired financial assets.

<sup>2/</sup> Allowance for expected credit loss as defined in the TFRS 9. For financial instruments measured at fair value through other comprehensive income, the provisions as stipulated in TFRS 7 - "Financial Instruments: Disclosures" shall not be presented in the table, where the exposures shall be shown as net of provisions.

<sup>3/</sup> Net exposure = Exposures - Provision

<sup>4/</sup> Including accrued interest and after netting of unearned income and profit (loss) from changing new conditions, and including loan and accrued interest of interbank and money market

<sup>5/</sup> Excluding accrued interest and net of allowance for securities revaluation, but not including investment in receivables

<sup>6/</sup> Including accrued interest

<sup>7/</sup> Before credit conversion factor

**Table 13 Loan Exposures including Accrued Interest and Fixed Income Investment before Credit Risk Mitigation Classified by Country or Region and BOT's Asset Classification**

31 Dec 25

Unit : Million Baht

Country or Region	Loan (Including Accrued Interest) <sup>1/</sup>					Fixed Income Investment <sup>2/</sup>				
	No Significant Increase in Credit Risk	Significant Increase in Credit Risk	Credit Impaired	Purchased or Originated Credit Impaired	Total	No Significant Increase in Credit Risk	Significant Increase in Credit Risk	Credit Impaired	Purchased or Originated Credit Impaired	Total
Thailand	241,342	17,897	5,670	-	<b>264,910</b>	7,069	-	241	-	<b>7,310</b>
Asia Pacific (excluding Thailand)	9,898	0.1	-	-	<b>9,898</b>	-	-	-	-	-
North America and Latin America	1	-	-	-	<b>1</b>	-	-	-	-	-
Africa and Middle East	2	0.5	-	-	<b>2</b>	-	-	-	-	-
Europe	7	0.4	-	-	<b>7</b>	-	-	-	-	-
<b>TOTAL</b>	<b>251,250</b>	<b>17,898</b>	<b>5,670</b>	-	<b>274,819</b>	<b>7,069</b>	-	<b>241</b>	-	<b>7,310</b>

31 Dec 24

Unit : Million Baht

Country or Region	Loan (Including Accrued Interest) <sup>1/</sup>					Fixed Income Investment <sup>2/</sup>				
	No Significant Increase in Credit Risk	Significant Increase in Credit Risk	Credit Impaired	Purchased or Originated Credit Impaired	Total	No Significant Increase in Credit Risk	Significant Increase in Credit Risk	Credit Impaired	Purchased or Originated Credit Impaired	Total
Thailand	235,957	19,042	5,758	-	<b>260,757</b>	4,285	-	211	-	<b>4,495</b>
Asia Pacific (excluding Thailand)	9,533	1	0.3	-	<b>9,534</b>	-	-	-	-	-
North America and Latin America	1	-	-	-	<b>1</b>	-	-	-	-	-
Africa and Middle East	2	-	-	-	<b>2</b>	-	-	-	-	-
Europe	4	0.4	0.5	-	<b>5</b>	-	-	-	-	-
<b>TOTAL</b>	<b>245,496</b>	<b>19,043</b>	<b>5,759</b>	-	<b>270,299</b>	<b>4,285</b>	-	<b>211</b>	-	<b>4,495</b>

<sup>1/</sup> Including accrued interest and after netting of unearned income and profit (loss) from changing new conditions, and including loan and accrued interest of interbank and money market

<sup>2/</sup> Not including accrued interest and after netting of impairment (but including investment in receivables)

**Table 13A Provision (General Provision and Specific Provision) and Write-Off Amount during The Year for Loan including Accrued Interest and Fix Income Investment Classified by**

31 Dec 25

Unit : Million Baht

Country or Region	Loan (Including Accrued Interest) <sup>1/</sup>				Fixed Income Investment <sup>2/</sup>		
	Provision <sup>3/</sup> under SA Approach		Provision <sup>3/</sup> under IRB Approach	Write-Off Amount during The Year	Provision <sup>3/</sup> under SA Approach		Provision <sup>3/</sup> under IRB Approach
	General Provision <sup>4/</sup>	Specific provision			General Provision <sup>4/</sup>	Specific provision	
Thailand		1,797	7,106	3,458	-	-	
Asia Pacific (excluding Thailand)		0.0	104	-	-	-	
North America and Latin America		-	0.0	-	-	-	
Africa and Middle East		-	0.2	-	-	-	
Europe		-	0.2	-	-	-	
<b>Total</b>	<b>233</b>	<b>1,797</b>	<b>7,210</b>	<b>3,458</b>	<b>-</b>	<b>-</b>	

31 Dec 24

Unit : Million Baht

Country or Region	Loan (Including Accrued Interest) <sup>1/</sup>				Fixed Income Investment <sup>2/</sup>		
	Provision <sup>3/</sup> under SA Approach		Provision <sup>3/</sup> under IRB Approach	Write-Off Amount during The Year	Provision <sup>3/</sup> under SA Approach		Provision <sup>3/</sup> under IRB Approach
	General Provision <sup>4/</sup>	Specific provision			General Provision <sup>4/</sup>	Specific provision	
Thailand		1,567	6,532	4,842	-	-	
Asia Pacific (excluding Thailand)		0.1	84	-	-	-	
North America and Latin America		-	0.0	-	-	-	
Africa and Middle East		-	0.0	-	-	-	
Europe		-	0.3	-	-	-	
<b>Total</b>	<b>274</b>	<b>1,567</b>	<b>6,616</b>	<b>4,842</b>	<b>-</b>	<b>-</b>	

<sup>1/</sup> Including provision and write-off during the year of loan and accrued interest of interbank and money market

<sup>2/</sup> Not including investment in receivables

<sup>3/</sup> Allowance for expected credit loss

<sup>4/</sup> Disclose in total value

**Table 14 Loan Exposures including Accrued Interest\* before Credit Risk Mitigation Classified by Type of Business and BOT's Asset Classification**

Unit : Million Baht

Type of Business	31 Dec 25					31 Dec 24				
	No Significant Increase in Credit Risk	Significant Increase in Credit Risk	Credit Impaired	Purchased or Originated Credit Impaired	Total	No Significant Increase in Credit Risk	Significant Increase in Credit Risk	Credit Impaired	Purchased or Originated Credit Impaired	Total
- Agricultural and Mining	1,141	137	70	-	<b>1,347</b>	1,094	182	62	-	<b>1,338</b>
- Manufacturing and Commerce	21,642	1,721	321	-	<b>23,684</b>	20,637	1,806	397	-	<b>22,840</b>
- Real Estate and Construction	27,573	837	118	-	<b>28,528</b>	29,665	303	107	-	<b>30,075</b>
- Public Utilities and Services	39,383	666	236	-	<b>40,284</b>	38,435	784	318	-	<b>39,537</b>
- Housing Loan	4,667	273	306	-	<b>5,246</b>	5,642	287	374	-	<b>6,303</b>
- Hire Purchase	78,951	7,558	2,720	-	<b>89,229</b>	73,678	8,378	2,356	-	<b>84,411</b>
- Others	77,893	6,706	1,900	-	<b>86,499</b>	76,346	7,303	2,145	-	<b>85,795</b>
<b>Total</b>	<b>251,250</b>	<b>17,898</b>	<b>5,670</b>	-	<b>274,819</b>	<b>245,496</b>	<b>19,043</b>	<b>5,759</b>	-	<b>270,299</b>

\* Including accrued interest and after netting unearned income and profit (loss) from changing new conditions, and including loan and accrued interest of interbank and money market

**Table 15 Provision (General provision and Specific provision) and Write-off Amount during The Year for Loan Including Accrued Interest\* Classified by Type of Business**

Unit : Million Baht

Type of Business	31 Dec 25				31 Dec 24			
	Provision <sup>1/</sup> under SA Approach		Provision <sup>1/</sup> under IRB Approach	Write-off Amount during The Year	Provision <sup>1/</sup> under SA Approach		Provision <sup>1/</sup> under IRB Approach	Write-off Amount during The Year
	General provision <sup>2/</sup>	Specific provision			General provision <sup>2/</sup>	Specific provision		
- Agricultural and Mining		7	63		11	51		
- Manufacturing and Commerce		99	1,011		107	959		
- Real Estate and Construction		28	428		21	356		
- Public Utilities and Services		124	506		129	434		
- Housing Loan		48	-		52	-		
- Hire Purchase		1,142	2,596		693	2,712		
- Others		349	2,606		554	2,105		
<b>Total</b>	<b>233</b>	<b>1,797</b>	<b>7,210</b>	<b>3,458</b>	<b>274</b>	<b>1,567</b>	<b>6,616</b>	<b>4,842</b>

\* Including Provision and Write-off Amount during The Year of Loan including Accrued Interest of Interbank and Money Market

<sup>1/</sup> Allowance for expected credit loss<sup>2/</sup> Disclose in total value

**Table 16 Reconciliation of Change in Provision for Asset Classification (General provision and Specific provision) for Loan including Accrued Interest\* Classified by Type of Business**

Unit : Million Baht

Items	31 Dec 25					31 Dec 24				
	Provision <sup>1/</sup> under SA Approach		Provision <sup>1/</sup> under IRB Approach	Provision <sup>1/</sup> for Bad Debt Written-Off	Total	Provision <sup>1/</sup> under SA Approach		Provision <sup>1/</sup> under IRB Approach	Provision <sup>1/</sup> for Bad Debt Written-Off	Total
	General Provision	Specific Provision				General Provision	Specific Provision			
Balance - Beginning of Year	274	1,567	6,616		<b>8,457</b>	548	1,436	7,910		<b>9,894</b>
Increase (Decrease) in Provision during The Year <sup>2/</sup>	-41	230	594	3,458	<b>4,240</b>	-274	130	-1294	4,842	<b>3,405</b>
Bad Debt Written-Off				-3458	<b>-3458</b>				-4842	<b>-4842</b>
Balance - Ending of Year	233	1,797	7,210		<b>9,240</b>	274	1,567	6,616		<b>8,457</b>

\* Including provision of loan and accrued interest of interbank and money market

<sup>1/</sup> Allowance for expected credit loss<sup>2/</sup> Not including expected credit loss of financial instruments measured at Fair Value through Other Comprehensive Income

**Table 17 Assets Exposures and Credit Equivalent Amount of Off Balance Sheet Items Classified by Asset Classes under SA Approach**

Unit : Million Baht

Assets Type	31 Dec 25			31 Dec 24		
	On Balance Sheet	Off Balance Sheet <sup>1/</sup>	Total	On Balance Sheet	Off Balance Sheet <sup>1/</sup>	Total
<b>1. Performing</b>						
1.1 Claims on Sovereign and Central Bank and Multilateral Development Bank and Public Sector Entities treated as Claims on Sovereian	8,026	-	<b>8,026</b>	5,919	-	<b>5,919</b>
1.2 Claims on Financial Institutions and Public Sector Entities treated as Claims on Financial Institutions and Securities Company	39,507	121	<b>39,627</b>	38,455	86	<b>38,541</b>
1.3 Claims on Corporate and Public Sector Entities treated as Claims on Corporate	10,054	4	<b>10,058</b>	8,915	26	<b>8,941</b>
1.4 Claims on Retail	23,577	-	<b>23,577</b>	19,957	-	<b>19,957</b>
1.5 Claims on Residentail Property	4,701	-	<b>4,701</b>	5,762	1	<b>5,763</b>
1.6 Other Assets	-	-	-	-	-	-
<b>2. Non-performing</b>	<b>967</b>	<b>0</b>	<b>967</b>	<b>1,033</b>	<b>0</b>	<b>1,033</b>
<b>Total</b>	<b>86,832</b>	<b>125</b>	<b>86,957</b>	<b>80,042</b>	<b>113</b>	<b>80,155</b>

<sup>1/</sup> Including Repo-Style Transaction and Reverse repo

**Table 18 Assets Exposures and Credit Equivalent Amount of Off Balance Sheet Items Classified by Asset Classes under IRB Approach**

Unit : Million Baht

Assets Type	31 Dec 25			31 Dec 24		
	On Balance Sheet	Off Balance Sheet <sup>1/</sup>	Total	On Balance Sheet	Off Balance Sheet <sup>1/</sup>	Total
<b>1. Non-Default</b>	<b>203,385</b>	<b>4,864</b>	<b>208,249</b>	<b>201,310</b>	<b>6,643</b>	<b>207,953</b>
1.1 Corporate Lending	67,855	4,864	<b>72,719</b>	68,776	6,643	<b>75,419</b>
1.2 Hire Purchase	121,836	-	<b>121,836</b>	121,001	-	<b>121,001</b>
1.3 Equity Exposures	4,085	-	<b>4,085</b>	3,506	-	<b>3,506</b>
1.4 Other Assets	9,610	-	<b>9,610</b>	8,026	-	<b>8,026</b>
<b>2. Default</b>	<b>2,193</b>	<b>18</b>	<b>2,211</b>	<b>2,623</b>	<b>18</b>	<b>2,641</b>
<b>Total</b>	<b>205,578</b>	<b>4,882</b>	<b>210,460</b>	<b>203,933</b>	<b>6,661</b>	<b>210,594</b>

<sup>1/</sup> Including Repo-Style Transaction and Reverse repo

Table 19 Assets Exposures and Off Balance Sheet Items\* after Credit Risk Mitigation in each Assets Type Classified by Risk Weight under Standardised Approach

Unit : Million Baht

Assets Type	31 Dec 25														
	Exposures with Rating					Exposures without Rating									
	0	20	50	100	150	0	20	50	35	75	100	625	937.5	100/8.5%	
Risk Weight (%)	0	20	50	100	150	0	20	50	35	75	100	625	937.5	100/8.5%	
<b>Performing</b>															
Claims on Sovereign and Central Bank and Multilateral Development Bank and Public Sector Entities treated as Claims on Sovereign	8,617	-	-	-	-			-			-				
Claims on Financial Institutions and Public Sector Entities treated as Claims on Financial Institutions and Securities Company	40	1,855	9	124	-						-				
Claims on Corporate and Public Sector Entities treated as Claims on Corporate	561	10	12	-	0.4						9,462				
Claims on Retail						158				22,586	584				
Claims on Residential Property									3,093	1,608	-				
Other Assets						-	-				-	-	-	-	
Risk Weight (%)	0	20	50	100	150	0	20	50	35	75	100	625	937.5	100/8.5%	
<b>Non-performing <sup>1/</sup></b>			448	440	48					31					
<b>Exposures to be Deducted from Capital</b>	-														

Unit : Million Baht

Assets Type	31 Dec 24														
	Exposures with Rating					Exposures without Rating									
	0	20	50	100	150	0	20	50	35	75	100	625	937.5	100/8.5%	
Risk Weight (%)	0	20	50	100	150	0	20	50	35	75	100	625	937.5	100/8.5%	
<b>Performing</b>															
Claims on Sovereign and Central Bank and Multilateral Development Bank and Public Sector Entities treated as Claims on Sovereign	6,222	-	-	-	-			-			-				
Claims on Financial Institutions and Public Sector Entities treated as Claims on Financial Institutions and Securities Company	2	1,592	1	430	-						-				
Claims on Corporate and Public Sector Entities treated as Claims on Corporate	363	4	2	-	1						8,563				
Claims on Retail						84				19,174	534				
Claims on Residential Property									3,786	1,977	-				
Other Assets						-	-				-	-	-	-	
Risk Weight (%)	0	20	50	100	150	0	20	50	35	75	100	625	937.5	100/8.5%	
<b>Non-performing <sup>1/</sup></b>			231	701	65					37					
<b>Exposures to be Deducted from Capital</b>	-														

\* After Credit Conversion Factor

<sup>1/</sup> For Non Credit Risk Mitigation, Risk Weight is based on the Provision Set up

**Table 20 Credit Risk Assessment Information under IRB Approach for Corporate Exposures**

31 Dec 25

Type of Retail Exposures	Non-Defaulted Group			Default Group		
	EAD <sup>1/</sup> (MM)	Ø PD <sup>2/</sup> (%)	Ø RW <sup>3/</sup> (%)	EAD <sup>1/</sup> (MM)	Ø PD <sup>2/</sup> (%)	Ø RW <sup>3/</sup> (%)
Corporate Lending (excluding Specialized Lending and SME)	29,551	2.60%	72.11%	259	100.00%	0.00%
SME classified as Corporate Lending	8,071	6.99%	115.99%	60	100.00%	0.00%
Specialized Lending	35,606	N.A.	82.65%	-	N.A.	0.00%
<b>Total</b>	<b>73,228</b>		<b>82.07%</b>	<b>319</b>		

31 Dec 24

Type of Retail Exposures	Non-Defaulted Group			Default Group		
	EAD <sup>1/</sup> (MM)	Ø PD <sup>2/</sup> (%)	Ø RW <sup>3/</sup> (%)	EAD <sup>1/</sup> (MM)	Ø PD <sup>2/</sup> (%)	Ø RW <sup>3/</sup> (%)
Corporate Lending (excluding Specialized Lending and SME)	31,527	2.80%	73.96%	229	100.00%	0.00%
SME classified as Corporate Lending	8,637	6.90%	126.07%	90	100.00%	0.00%
Specialized Lending	35,915	N.A.	83.41%	-	N.A.	0.00%
<b>Total</b>	<b>76,079</b>		<b>84.33%</b>	<b>319</b>		

<sup>1/</sup> The net amount after CRM of total outstanding amount of on-balance sheet items and credit converted amount of off-balance sheet items

<sup>2/</sup> Ø PD is EAD-weighted average of PD, Downturn PD based on IRB capital calculation

<sup>3/</sup> Ø RW is EAD-weighted average of risk weighted asset

**Table 21 Credit Risk Assessment Information under IRB Approach for Hire Purchase (Pooled basis)**

31 Dec 25

Type of Retail Exposures	Non-Defaulted Group				Defaulted Group			
	EAD <sup>1/</sup> (MM)	Ø PD <sup>2/</sup> (%)	Ø RW <sup>3/</sup> (%)	Ø LGD <sup>4/</sup> (%)	EAD <sup>1/</sup> (MM)	Ø PD <sup>2/</sup> (%)	Ø RW <sup>3/</sup> (%)	Ø LGD <sup>4/</sup> (%)
Hire Purchase	89,899	5.35%	50.12%	36.18%	2,082	100.00%	78.34%	38.07%
Auto Cash	35,131	11.31%	84.62%	49.01%	1,692	100.00%	122.09%	49.01%
<b>Total</b>	<b>125,031</b>	<b>7.02%</b>	<b>59.82%</b>	<b>39.78%</b>	<b>3,774</b>	<b>100.00%</b>	<b>97.96%</b>	<b>42.98%</b>

31 Dec 24

Type of Retail Exposures	Non-Defaulted Group				Defaulted Group			
	EAD <sup>1/</sup> (MM)	Ø PD <sup>2/</sup> (%)	Ø RW <sup>3/</sup> (%)	Ø LGD <sup>4/</sup> (%)	EAD <sup>1/</sup> (MM)	Ø PD <sup>2/</sup> (%)	Ø RW <sup>3/</sup> (%)	Ø LGD <sup>4/</sup> (%)
Hire Purchase	88,812	6.00%	47.94%	34.26%	2,229	100.00%	85.57%	35.63%
Auto Cash	34,995	12.88%	80.49%	45.20%	1,687	100.00%	119.60%	45.20%
<b>Total</b>	<b>123,807</b>	<b>7.94%</b>	<b>57.14%</b>	<b>37.35%</b>	<b>3,915</b>	<b>100.00%</b>	<b>100.23%</b>	<b>39.75%</b>

<sup>1/</sup> The net amount after CRM of total outstanding amount of on-balance sheet items and credit converted amount of off-balance sheet items

<sup>2/</sup> Ø PD is EAD-weighted average of PD, Downturn PD based on IRB capital calculation which is conservatively bias  
, PD under capital calculation is much higher than the long-term average PD or actual PD

<sup>3/</sup> Ø RW is EAD-weighted average of risk weighted asset

<sup>4/</sup> Ø LGD is EAD-weighted average of LGD, Downturn LGD based on IRB capital calculation which is conservatively bias  
and much higher than the actual LGD

**Table 22 The Net Amount after CRM of Total Outstanding Amount and Off-balance Sheet Amount after CCF under IRB Approach Classified by Expected Loss Rating**

Type of Retail Exposures	31 Dec 25				31 Dec 24			
	Non-Defaulted Group		Defaulted Group		Non-Defaulted Group		Defaulted Group	
	EAD	EL <sup>1/</sup> (%)	EAD	EL <sup>1/</sup> (%)	EAD	EL <sup>1/</sup> (%)	EAD	EL <sup>1/</sup> (%)
Hire Purchase	89,899	2.10%	2,082	31.81%	88,812	2.22%	2,229	28.78%
Auto Cash	35,131	5.54%	1,692	39.24%	34,995	5.82%	1,687	35.63%
<b>Total</b>	<b>125,031</b>	<b>3.07%</b>	<b>3,774</b>	<b>35.14%</b>	<b>123,807</b>	<b>3.24%</b>	<b>3,915</b>	<b>31.73%</b>

<sup>1/</sup>  $\sum EL_i + \sum EAD_i$ 

EL is estimated based on capital calculation under IRB approach, Downturn EL, which is conservatively bias and higher than the estimated EL under normal situation

**Table 23 The Net Amount after CRM of Total Outstanding Amount of Specialized Lending under IRB Approach adopting Supervisory Slotting Criteria Classified by %Risk Weight**

Unit : Million Baht

Supervisory Grade	%Risk Weight	EAD <sup>1/</sup> (MM)	
		31 Dec 25	31 Dec 24
Excellent	70%	17,612	14,101
Excellent*	50%	-	-
Good	90%	16,240	20,753
Good*	75%	-	-
Satisfactory	115%	1,409	924
Weak	250%	346	138
Default	0%	-	-
<b>Total</b>		<b>35,606</b>	<b>35,915</b>

<sup>1/</sup> The net amount after CRM of total outstanding amount of specialized lending

**Table 24 Actual Loan Losses of IRB Bank Classified by Asset Type**

Unit : Million Baht

Assets Type	Actual Loss	
	31 Dec 25	31 Dec 24
Hire Purchase	462	1,230
Auto Cash	1,215	1,215
<b>Total</b>	<b>1,678</b>	<b>2,445</b>

**Table 25 Comparison of Expected Loss and Actual Loan Losses**

Unit : Million Baht

Assets Type	31 Dec 25		31 Dec 24	
	Expected loss <sup>1/</sup>	Actual Loss	Expected loss	Actual Loss
Hire Purchase	2,554	462	2,615	1,230
Auto Cash	2,612	1,215	2,639	1,215
<b>Total</b>	<b>5,165</b>	<b>1,678</b>	<b>5,254</b>	<b>2,445</b>

<sup>1/</sup> Expected loss is estimated based on Basel III - IRB approach, Downturn EL

Which is incredibly higher than the Actual Loss as well as its Historical Average

### Credit Risk Mitigation

Based on the Basel III minimum capital requirement under Standardized Approach and Foundation Internal Rating Based Approach, Credit Risk Mitigation (CRM) has become effective in obtaining capital relief. Currently in TISCO, only financial collateral and guarantee are considered applied eligible collaterals.

following the Bank of Thailand's rules and regulation under CRM process. In addition, TISCO still has no policy to adopt netting agreements in both on and off-balance sheets under CRM process.

**Table 26 Assets Exposures Covered with Collateral under Standardised Approach Classified by Type of Collateral**

Unit : Million Baht

Assets Type	31 Dec 25		31 Dec 24	
	Financial Collateral <sup>1/</sup>	Guarantee and Credit Derivative	Financial Collateral <sup>1/</sup>	Guarantee and Credit Derivative
<b>1. Performing</b>				
1.1 Claims on Financial Institutions and Public Sector Entities treated as Claims on Financial Institutions and Securities Company	591	-	303	-
1.2 Claims on Corporate and Public Sector Entities treated as Claims on Corporate	13	-	12	-
1.3 Claims on Retail	235	-	158	-
<b>2. Non-performing</b>	-	-	-	-
<b>Total</b>	<b>839</b>	<b>-</b>	<b>473</b>	<b>-</b>

<sup>1/</sup> Eligible Financial Collateral after Haircut

**Table 27 Assets Exposures Covered with Collateral under IRB Approach Classified by Type of Collateral**

Unit : Million Baht

Assets Type	31 Dec 25		31 Dec 24	
	Financial Collateral <sup>1/</sup>	Guarantee and Credit Derivative	Financial Collateral <sup>1/</sup>	Guarantee and Credit Derivative
<b>Performing</b>				
1 Corporate Lending (excluding Specialized Lending and SME)	470	267	633	110
2 SME classified as Corporate Lending	937	642	665	1,310
3 Specialized Lending	-	140	-	142
<b>Total</b>	<b>1,407</b>	<b>1,048</b>	<b>1,298</b>	<b>1,562</b>

<sup>1/</sup> Eligible Financial Collateral after Haircut

Most of TISCO's eligible collateral applied under CRM process consists of Government Bond, TISCO's Negotiable Certificate of Deposit (NCD) and Bill of Exchange (BE), and Listed Equity where the appraisal value has been performed regularly following the Bank of Thailand guideline. Moreover, positive correlation of the collateral shall be assessed and reviewed in order to ensure the effectiveness of credit risk mitigation.

### Market Risk

An effective market risk management has been established by adopting the risk management policy approved by the Risk Management Committee, supported by enterprise risk management function in order to ensure appropriate application of the policy in all functions.

In accordance with the market risk capital requirement based on the Bank of Thailand's rules and regulations, since the trading book position of TISCO is still below the minimum thresholds, TISCO is required to maintain its capital to support the market risk only for the element that cover the price risk of commodities related product. However, internal market risk assessments including all positions related to price and interest rate change has been performed to ensure the effective market risk management still in place.

**Table 28 Minimum Capital Requirement for Market Risk under Standardised Approach**

Unit : Million Baht

Minimum Capital Requirement for Market Risk under SA	31 Dec 25	31 Dec 24
1. Interest Rate Risk	-	-
2. Equity Price Risk	-	-
3. Foreign Exchange Rate Risk	-	-
4. Commodity Price Risk	139	93
<b>Total</b>	<b>139</b>	<b>93</b>

### Equity Exposures in Banking Book

Market risk of equity in banking book stems from adverse changes in securities prices, which directly affect net income, capital, asset value, and liabilities of TISCO.

- Market Risk Management in Equity Framework

Risk Management Committee is responsible to oversee the portfolio risk management and control of market risks. The business lines are accountable to manage market risks in their portfolios within the guidelines and limits set by the Risk Management Committee. Specific-Purpose Risk Authorities have been established in high-risk areas to oversee all aspects of transaction-level risks, such as setting investment guidelines, authorizing investment transactions and trade counterparties etc. In addition, the Risk Oversight Committee shall advise the Board of Directors on risk governance, review sufficiency and effectiveness of overall risk management policy and strategies.

Market exposures shall be grouped appropriately according to the nature and characteristics of risks involved. Suitable risk treatment framework shall be implemented to effectively manage each class of market exposures. Portfolio market risks of all assets and liabilities shall be assessed and quantified using the Value-at-Risk (VaR) concept employing methodologies and techniques appropriate to the nature of risks involved. Back-testing has been prudently performed to validate internal value-at-risk model. In addition, stress testing in place as a supplement to VaR is performed under various extreme scenarios. The risk assessment and corresponding risk treatment has taken into account the transaction intent as well as the market liquidity of the securities.

Interest rate risk from banking book is analyzed on the basis of mismatch between the timing of interest rate re-pricing of assets and liabilities and its potential impacts on future net interest income of TISCO Group under simulated scenarios.

Sophisticated market risk positions, such as derivatives securities, shall be handled with special attention. Derivative risks must be decomposed into basic risks and analyzed such that the inherent risk profile is clearly understood. In addition, derivative risk management policy has been set up in order to effectively control and manage risks from derivative transactions with appropriation to complexity of the derivative. Important market risk factors are provided as follows:

(1) Listed Equity Risk and LTF

The vulnerability of market price will directly affect listed equity investment portfolio measured at fair value through profit or loss (FVTPL) in which a change in its value would impact the net profit of TISCO Group.

TISCO calculates VaR for risk assessment purposes and files reports to management in charge as well as to the Risk Management Committee on a daily basis. VaR is a maximum potential loss at a predefined confidence level at 99% and time horizon. For effective risk management and control, trigger limits have been set up to monitor the overall market risk profile according to internal guidelines, such as concentration trigger limit, stop-loss trigger limit, etc.

(2) Non-Listed Equity Risk

Presently, our investment strategy is not to increase the size of the non-listed equity portfolio. TISCO is instead seeking opportunities to liquidate them, while at the same time closely monitoring portfolio quality on a regular basis.

**Policy in Determining Fair Value of Financial Instruments**

A fair value is the amount for which an asset can be exchanged or a liability settled between knowledgeable, willing parties in an arm's length transaction.

In determining the fair value of financial instruments that are not actively traded and for which quoted market prices are not readily available, the business units exercise judgment, using valuation techniques that are appropriate in the circumstances and maximizes the use of relevant observable inputs related to assets and liabilities that are required to be measured at fair value.

In determining the fair value of financial instruments, the estimate fair value will be adjusted by allowance for expected credit loss with respective risk. For financial instruments with duration of one year or less, the book value represents a reasonable estimate of fair value. For financial instruments with duration greater than one year, fair value was determined based on the quoted market prices, where available, or otherwise based on present values of contractual cash flows, discounted using rates at which financial instruments with similar features and maturities could be issued as of the balance sheet date.

The methods and assumptions used by the Bank in estimating the fair value of financial instruments are as follows:

- For financial assets and liabilities which have short-term maturities or carry interest at rates approximating the market rate, including cash, interbank and money market items (assets), securities and derivatives business receivables, receivable from clearing house, deposits, interbank and money market items (liabilities), liabilities payable on demand, securities and derivative business payables and payables to clearing house, the carrying amounts in the statement of financial position approximate their fair value.

- For investments in debt securities, their fair value is generally derived from quoted market prices or determined by using the yield curve as announced by the Thai Bond Market Association.

- For investments in marketable equity securities, their fair value is generally derived from quoted market prices, or based on discounted future cash flows and/or book value of the investees for investments in non-marketable equity securities.

- Loans to customers and accrued interest receivables, except for hire purchase receivables and other retail loans, are presented at fair value which is estimated from balance of loans to customers and accrued interest receivables as stated in the financial statements less allowance for expected credit loss, since most loans carry interest at floating rates. Hire purchase receivable and other retail loans are presented at fair value, which is the present value of future cash inflows, discounted by the current interest rate for new loans.

- The fair value of debts issued and borrowings is estimated by discounting expected future cash outflows by the current market interest rates of the borrowings with similar terms and conditions.

For derivatives, their fair value is determined by using a discounted future cash flow model and a valuation model technique. Most of the inputs used for the valuation are observable in the relevant market, such as spot rates of foreign currencies, yield curves of the respective currencies and interest rate yield curves. TISCO Bank has considered the counterparty's credit risk when determining the fair value of derivatives.

**Table 29 Equity Exposures in Banking Book**

Equity Exposures	Unit : Million Baht	
	31 Dec 25	31 Dec 24
1. Equity Exposures		
1.1 Listed Equity Exposures (Both Domestic and Foreign)	1,719	1,141
1.2 Other Equity Exposures (Both Domestic and Foreign)	1,457	1,419
2. Profit (Loss) from Sale of Equity during The Period	-0.3	-1.0
3. Revaluation Surplus (Deficit) from Fair Value through Other Comprehensive Income (FVOCI) of Equity	-	-
4. Minimum Capital Requirement for Equity Exposures under IRB	459	415
5. Equity Exposure under IRB with Exemption to Calculate under Standardised Approach	4,085	3,506

### Interest Rate Risk in Banking Book

Interest rate risk in banking book is considered an impact to the vulnerability of earnings and economic value including assets and liabilities profile whenever there is a change in interest rate both on and off-balance sheet position.

- Interest Rate Risk in Banking Book Management Framework

Interest rate risk occurs whenever there is a mismatch in the re-pricing period of assets and liabilities. A movement in the level of interest rates may lead to higher borrowing costs when compared to earnings, resulting in lower interest rate income, which in turn influences TISCO's income and capital. The Risk Management Committee also acts as the Assets and Liabilities Management Committee (ALCO), which is responsible for managing and maintaining interest rate risk at an appropriate level.

Under the TISCO internal model in assessing interest rate risk in banking book, the risk has been measured on a monthly basis by applying the appropriate assumptions in order to estimate the interest rate movement and applying the concept of Value at Risk to calculate the possible impact to TISCO earnings at confident level of 99%.

**Table 30 Impact from Change in Interest Rate\* to Earnings**

Currency	Unit : Million Baht	
	Impact to Earnings	
	31 Dec 25	31 Dec 24
Baht	-170	-128
USD	-	-
EURO	-	-
Others	-	-
<b>Total Impact to Earnings</b>	<b>-170</b>	<b>-128</b>

\* Change in Interest Rate of 100 bps

## Operational Risk

Operational risk is the risk arising from errors, inadequacies, or deficiencies in operational processes, information technology systems, people, or external factors, including legal risks, fraud, and corruption. The impact can be classified into financial loss and non-financial loss, such as reputational damage and business opportunity losses. TISCO Group has established policies and continuously developed an operational risk management framework to enhance operational process efficiency, systematically control and manage risks to a uniform standard, reduce operational damage, and prevent potential future risks.

- Operational Risk Management Framework

Establishing a risk-aware organizational culture (Risk Culture) is regarded as a fundamental foundation for driving effective operational risk management across the TISCO Group. This begins with Tone from the Top, whereby the Board of Directors and senior management demonstrate clear commitment and emphasize the importance of risk management by embedding risk management principles at all levels of the organization. Management is expected to set an appropriate example by adhering to risk policies and guidelines, thereby fostering confidence and cooperation among employees. This approach promotes risk ownership at the individual and organizational levels, encouraging active participation and accountability in managing operational risks under each party's responsibility.

The Operational Risk Management function oversees operational risks at the group level and provides support, guidance, oversight, and monitoring to ensure that all units operate in accordance with established policies and guidelines. This is intended to keep risks within an acceptable level aligned with the Group's Risk Appetite and business context. The Company has established an operational risk assessment process covering the identification of key risks, evaluation of control effectiveness, establishment of Key Risk Indicators (KRIs), ongoing monitoring, formulation of annual risk mitigation and prevention plans, and reporting of overall risk assessment results and proposed action plans to management and relevant committees for their information and consideration.

The Company requires risk assessments for new products, processes, and technologies, as well as for significant changes. Such assessments encompass strategic, operational, information technology, cybersecurity, compliance, and other relevant risks, including environmental, social, and governance (ESG) factors. These assessments are subject to management review and approval by relevant committees for consideration to ensure that risks are maintained at an acceptable level prior to implementation. To enhance employees' understanding and ensure the proper execution of processes, regular training and communication are conducted continually.

To ensure appropriate handling of operational errors, the Company has established guidelines for error management. A designated function is responsible for analyzing root causes, identifying corrective actions, and defining preventive measures to reduce the likelihood of recurrence. Summaries of error incidents and material error cases are presented to relevant committees for their acknowledgment and, where appropriate, for consideration of the adequacy of corrective and preventive actions.

With respect to complaint management, the Company provides multiple channels for receiving complaints and has established guidelines to ensure that complaint resolution and, where applicable, compensation are conducted fairly and within defined timelines. Complaints received are analyzed and

summarized for reporting to management and relevant committees for review and approval of customer compensation (if any), as well as for process improvements, as deemed appropriate.

In addition, the Company has implemented a centralized system to record and consolidate information on operational errors, complaints, compensation data, and corrective actions. This system serves as an important tool for tracking and monitoring remediation within specified timeframes. The accumulated data are subsequently utilized as inputs for ongoing operational risk assessment and the formulation of operational risk management plans.

- Business Continuity Plan (BCP)

The Company places strong emphasis on Business Continuity Plan as a critical element of operational risk management and operational resilience. BCP arrangements are designed with particular focus on the continuity of core and critical transactions, customer-facing services, and key supporting processes, while also ensuring appropriate communication, staff readiness, and safety measures during disruptive events.

In response to evolving risk scenarios, the Company regularly reviews and enhances its BCP framework by incorporating insights from various situations, including natural disasters such as earthquakes and flooding, as well as geopolitical tensions, social unrest, and other conflict-related events. These scenarios are assessed for their potential impact on critical business operations, transaction processing, customer services, system availability, and people's safety, both employees and external individuals within TISCO premises.

BCP scenario reviews explicitly consider the readiness of work-from-anywhere capabilities, the robustness of supporting infrastructure, and the effectiveness of internal communication protocols to ensure that employees clearly understand response procedures, roles, and expected actions during incidents. Particular attention is given to measures related to people's safety and security at office locations, including access control, evacuation procedures, coordination with relevant support functions, and timely communication.

The Company also conducts periodic reviews and tests of BCP arrangements to confirm that response plans, escalation mechanisms, and coordination across business units remain aligned with current operating conditions and emerging risks. Observations and improvement opportunities identified from scenario analyses, exercises, or actual events are consolidated and used to further refine continuity strategies, strengthen recovery capabilities, and enhance overall operational resilience.

Through this continuous review and improvement process, Business Continuity Planning remains an integral component of the operational risk management framework, supporting the Company's ability to sustain critical operations, protect employees, and serve customers effectively under adverse and changing circumstances.

- Information Security Management

The adoption of digital technology to expand channels for offering products and services to customers across the TISCO Group has been continuously developed and enhanced to respond to evolving

customer needs and market changes. Nevertheless, the development and use of digital technologies also entail inherent risks, particularly in information system security. Cyber threats have been rapidly evolving and increasing in sophistication, and if not effectively managed, may have implications for the Company's operations across multiple dimensions, including financial impact, reputational risk, and potential loss of customer confidence. The Company also recognizes potential impacts on the safety of employees, customers, business partners, and other relevant stakeholders. Accordingly, emergency response plans have been established as an integral part of the business continuity arrangements.

To address these risks, the Company has established an Information Technology Risk Management function responsible for overseeing IT risk management and IT compliance. A structured risk management framework has been implemented, with regular monitoring of risk exposures through IT Key Risk Indicators (IT KRIs) to maintain risk levels within an acceptable range aligned with the Company's Risk Appetite. The results of IT risk management activities are reported to relevant management and oversight committees for their review and consideration.

In response to the continuously increasing volume and complexity of cyber threats, which may affect the security of the Company's information assets, systems, and customer trust, the Company has established an IT Security Management function to proactively manage cyber risks. A Security Operations Center (SOC) has been set up to provide 24/7 monitoring and surveillance of cyber threats, leveraging advanced technologies and tools to detect, analyze, and respond to incidents in a timely manner. These measures help prevent or mitigate potential impacts and support the Company's operational continuity.

These security management practices also enhance the confidence of customers and users of the Company's financial services that their personal data and assets are protected by appropriate security controls. In addition, the IT Security Management function continuously monitors emerging cybercrime trends and attack techniques to further strengthen and enhance security measures on an ongoing basis.

Beyond enhancing cybersecurity capabilities, the Company places importance on the responsible use of artificial intelligence (AI) to improve operational efficiency and enhance customer services. To manage associated risks, an AI Risk Governance framework has been established to ensure that AI usage is transparent, auditable, and aligned with applicable laws and standards. Key risk considerations include data accuracy and quality, model bias, system and model security, personal data protection, and the explainability of AI-generated outcomes. These measures support the effective deployment of AI while maintaining risk exposures within acceptable levels.

In addition, the Company provides training and awareness programs to employees and external parties on cybersecurity threats and preventive practices through online seminars, brochures, infographics, and official communication channels of the TISCO Group. These initiatives aim to enhance awareness of cyber risks and appropriate preventive measures, thereby reducing exposure to cyber threats and strengthening information security across employees and stakeholders.

As a result, the Company continues to maintain an effective, resilient, and forward-looking information security framework that is better prepared to respond to future cyber threats. This is complemented by ongoing research and development in artificial intelligence, continuous monitoring of regulatory developments, and the enhancement of employees' capabilities to use AI appropriately and



## TISCO FINANCIAL GROUP PUBLIC COMPANY LIMITED

securely. Such efforts support the Company's cybersecurity posture by promoting the responsible use of AI under appropriate governance, thereby strengthening overall risk management and enhancing the effectiveness of the Company's information security framework.



# TISCO FINANCIAL GROUP PUBLIC COMPANY LIMITED

## Composition of capital disclosure requirements

Attachment 1

### Main features of regulatory capital instruments

Subject		Description		
1	Issuer	TISCO Financial Group Public Company Limited		
2	Unique identifier	TISCO 317A	TISCO 356A	TISCO 350A
	<i>BOT's regulatory treatment</i>			
3	Instrument type (CET 1 / Tier 1 / Tier 2)	Tier 2	Tier 2	Tier 2
4	Qualified as capital under Basel III	Qualified	Qualified	Qualified
5	If not, specify unqualified feature as per the Basel III regulation	-	-	-
6	Recognised as capital partially or in full	Fully recognised	Fully recognised	Fully recognised
7	Eligible at solo/ group / group & solo	Group & Solo	Group & Solo	Group & Solo
8	Amount recognised in regulatory capital (Unit: million baht)	700 MM baht	1,000 MM baht	1,200 MM baht
9	Par value of instrument (Unit: baht)	1,000 baht	1,000 baht	1,000 baht
10	Accounting classification	Financial liabilities stated at amortised cost	Financial liabilities stated at amortised cost	Financial liabilities stated at amortised cost
11	Original date of issuance	July 7, 2021	June 6, 2025	October 21, 2025
12	Perpetual or dated	Dated	Dated	Dated
13	Original maturity date	July 7, 2031	June 6, 2035	October 21, 2035
14	Issuer call subject to prior supervisory approval	Issuer call option with BOT's prior approval	Issuer call option with BOT's prior approval	Issuer call option with BOT's prior approval
15	Optional call date, contingent call dates and redemption amount	(1) On the 5th anniversary from the issue date or at any coupon dates after the 5th year of issuance; or (2) Any change in tax law which affect tax benefits of the issuer; or (3) Any change in regulatory capital requirement that occurs on or after the issue date which disqualifies these debentures to be included in the Tier 2 capital of the issuer; or (4) Any other conditions which the Bank of Thailand may prescribe		
16	Subsequent call dates, if applicable			
	<i>Coupons / Other returns</i>			
17	Fixed or floating dividend / coupon	Fixed	Fixed	Fixed
18	Coupon rate and any related index	Fixed at 3.25%	Fixed at 3.25%	Fixed at 3.15%
19	Existence of a dividend stopper	No dividend stopper	No dividend stopper	No dividend stopper
20	Fully discretionary, partially discretionary or mandatory	Mandatory	Mandatory	Mandatory
21	Existence of step up or other incentive to redeem	No step up interest payment	No step up interest payment	No step up interest payment
22	Non-cumulative or cumulative	Non-cumulative	Non-cumulative	Non-cumulative



Subject		Description		
	Issuer	TISCO Financial Group Public Company Limited		
	Unique identifier	TISCO 317A	TISCO 356A	TISCO 350A
23	Convertible or non-convertible	Non-convertible	Non-convertible	Non-convertible
24	If convertible, conversion trigger(s)	-	-	-
25	If convertible, fully or partially	-	-	-
26	If convertible, conversion rate	-	-	-
27	If convertible, specify instrument type convertible into	-	-	-
28	If convertible, specify issuer of instrument it converts into	-	-	-
29	Write-down feature	Write-down feature	Write-down feature	Write-down feature
30	If write-down, write-down trigger(s)	In case of non-viability and/or regulatory authorities deciding to provide financial aids to the issuer, these debentures may be required to be written off (fully or partially).		
31	If write-down, full or partial	Full or partial write-down	Full or partial write-down	Full or partial write-down
32	If write-down, permanent or temporary	Permanent	Permanent	Permanent
33	if temporary write-down, description of write-up mechanism	-	-	-
34	Position in subordination hierarchy in liquidation (specify instrument type immediately senior to instrument)	Hybrid debt capital instrument / Preferred stock / Common stock	Hybrid debt capital instrument / Preferred stock / Common stock	Hybrid debt capital instrument / Preferred stock / Common stock



Reconciliation Requirements

Unit: MM baht			
Items related to capital funds as of December 31, 2025	Balance sheet as in published financial statements (a)	Under regulatory scope of consolidation (b)	References (c)
<b>Assets</b>			
1. Cash	826	826	
2. Interbank and money market items - net	40,360	40,360	
3. Financial Asset measured at Fair Value through Profit or Loss (FVPL)	3,176	3,176	
4. Derivatives assets	91	91	
5. Investments - net	7,310	7,310	
6. Investment in subsidiaries - net	876	909	
7. Loans to customers and accrued interest receivables - net	228,567	228,567	
8. Property foreclosed - net	1,274	1,274	
9. Premises and equipment - net	3,017	3,017	
10. Goodwill and intangible assets - net	44	44	K
11. Deferred tax assets	734	734	
12. Other assets - net	4,425	4,425	
<b>Total Assets</b>	<b>290,702</b>	<b>290,735</b>	
<b>Liabilities</b>			
13. Deposits	211,323	211,356	
14. Interbank and money market items - net	12,111	12,111	
15. Liabilities payable on demand	223	223	
16. Financial liabilities measured at fair value through profit and loss (FVPL)	-	-	
17. Derivatives liabilities	-	-	



TISCO FINANCIAL GROUP PUBLIC COMPANY LIMITED

Unit: MM baht

Items related to capital funds as of December 31, 2025	Balance sheet as in published financial statements (a)	Under regulatory scope of consolidation (b)	References (c)
18. Debts issued and borrowings			
18.1 Subordinated unsecured debentures	2,900	2,900	M
18.2 Unsubordinated unsecured debentures	7,620	7,620	
18.3 Unsubordinated guaranteed debentures	-	-	
18.4 Bills of exchange and Promissory notes	19	19	
19. Provisions	2,645	2,645	
20. Accrued interest payables	24	24	
21. Other liabilities	10,461	10,461	
<b>Total Liabilities</b>	<b>247,325</b>	<b>247,358</b>	
<b>22. Shareholders' Equity</b>			
22.1 Share capital			
22.1.1 Registered			
22.1.1.1 Preferred shares	0.3	0.3	
22.1.1.2 Common shares	8,007	8,007	
22.1.2 Issued and paid-up			
22.1.2.1 Preferred shares	0.1	0.1	L
22.1.2.2 Common shares	8,006	8,006	A
22.2 Warrants			
22.3 Share premium (discount)			
22.3.1 Share premium (discount) on preferred shares	-	-	
22.3.2 Share premium (discount) on common shares	1,018	1,018	B
22.4 Capital surplus on treasury stock - preferred shares			



TISCO FINANCIAL GROUP PUBLIC COMPANY LIMITED

Unit: MM baht

Items related to capital funds as of December 31, 2025	Balance sheet as in published financial statements (a)	Under regulatory scope of consolidation (b)	References (c)
22.5 Capital surplus on treasury stock - common shares			
22.6 Other components of shareholders' equity			
22.6.1 Surplus on revaluation of assets	1,312	1,312	F
22.6.2 Revaluation surplus (deficit) of equity investment	-	-	G
22.6.3 Revaluation surplus (deficit) of debt securities investment	65	65	H
22.6.4 Cash flow hedges Reserve	0	0	I
22.6.5 Translation differences	-	-	J
22.6.6 Share of other comprehensive income of associates and joint ventures	-	-	
22.6.7 Other components from owner changes	679	679	C
22.7 Retained earnings (deficit)			
22.7.1 Appropriated			
22.7.1.1 Statutory reserves	801	801	D
22.7.1.2 Others		25,693	E
22.7.2 Unappropriated	31,492	5,799	
22.8 <u>Less</u> Treasury stocks - preferred shares	-	-	
22.9 <u>Less</u> Treasury stocks - common shares	-	-	
Equity attributable to owners of the company	43,374	43,374	
22.10 Non-controlling interests of the subsidiaries	3	3	
<b>Total Shareholders' Equity</b>	<b>43,377</b>	<b>43,377</b>	
<b>Total Liabilities and Shareholders' Equity</b>	<b>290,702</b>	<b>290,735</b>	

# TISCO FINANCIAL GROUP PUBLIC COMPANY LIMITED



## Reconciliation requirements related to capital funds

Unit: MM baht

Capital Funds as of December 31, 2025		Components of capital funds (d)	References under regulatory scope of consolidation (e)
<b>Common Equity Tier 1 (CET1): Eligible items for Common Equity Tier 1</b>			
1	Paid-up shares capital net of treasury stocks	8,006	A
2	Warrants	-	
3	Premium (discount) on common share capital - net	1,018	B
4	Statutory reserves	801	D
5	Reserve appropriated from net profit	-	
6	Retained earnings after appropriation	25,693	E
7	Accumulated other comprehensive income		
7.1	Change in incremental from revaluation appraisal of land, buildings, or units of condominium	1,132	F
7.2	Gain (loss) on revaluation of available for sale equity investment	-	G
7.3	Gain (loss) on revaluation of available for sale debt securities	65	H
7.4	Cash flow hedges Reserve	0	I
7.5	Translation differences	-	J
7.6	Share of other comprehensive income of associates and joint ventures	-	
8	Other items from owner changes	679	C
9	Non-controlling interest of subsidiaries operating in commercial bank business which can be counted as CET1 of consolidated financial institutions	-	
10	<b>Total Common Equity Tier 1 (CET1) before regulatory adjustments and deduction items</b>	<b>37,395</b>	
<b>Common Equity Tier 1 (CET1): Regulatory adjustments</b>			
11	Cash flow hedge reserve	-	
12	Accumulated gain (loss) on fair value option	-	
13	Accumulated gain (loss) from fair value measurement of derivatives due to debit valuation adjustment	-	
14	Other items specified by the Bank of Thailand	-	
15	<b>Total regulatory adjustments to Common Equity Tier 1</b>	<b>-</b>	
<b>Common Equity Tier 1 (CET1): Deduction items</b>			
16	Net loss	-	
17	Goodwill	-	
18	Intangible assets	44	K
19	Deferred tax assets	774	
20	Shortfall of provision	-	
21	Securitisation gain on sale	-	
22	Reciprocal cross-holdings in common equity between banks and other financial business companies and other supporting business	-	
23	Investment in equity including warrants of finance companies and credit foncier companies, which are held directly and indirectly	-	
24	Investment in equity including warrants counted as CET 1 of other financial institutions or other consolidated financial institutions other than specified in no. 21 and 22	-	
25	Value of underlying financial instruments countable as Tier 1 capital under shareholders' equity of other financial institutions or financial groups, in case of buying equity derivatives	-	
26	Investment in equity including warrants of joint venture companies	-	
27	Investment in equity including warrants of companies engaged in financial business and supporting business which are held not exceeding 10% of paid-up share in each company	-	
28	Investment in equity including warrants of companies engaged in financial business and supporting business which are held exceeding 10% of paid-up share in each company	-	
29	Other items specified by the Bank of Thailand	-	
30	Deductions from Additional Tier 1 capital, for the remaining amounts in case Additional Tier 1 capital is insufficient to be fully deducted	-	
31	<b>Total regulatory deductions from Common Equity Tier 1</b>	<b>819</b>	
32	<b>Total Common Equity Tier 1 (CET1)</b>	<b>36,576</b>	

Capital Funds as of December 31, 2025		Components of capital funds (d)	References under regulatory scope of consolidation (e)
<b>Additional Tier 1 Capital: Eligible items for Additional Tier 1</b>			
33	Proceeds from issuance of non-cumulative preferred shares, after deducting the repurchase of non-cumulative preferred shares	0.1	L
34	Warrants of non-cumulative preferred shares	-	
35	Proceeds from issuance of subordinated debts, in which the holders' right to receive payment is after depositors, creditors and holders of Tier 2 financial instruments	-	
36	Premium (discount) on the instruments under no. 32 to 34	-	
37	Non-controlling interest of subsidiaries which can be counted as Additional Tier 1 capital	-	
<b>38</b>	<b>Total Additional Tier 1 capital before deduction items</b>	<b>0.1</b>	
<b>Additional Tier 1 Capital: Deduction items</b>			
39	Treasury financial instruments countable as Tier 1 capital	-	
40	Reciprocal cross-holding in financial instruments qualified as Additional Tier 1 capital between banks and other financial companies or other supporting business	-	
41	Investment in financial instruments qualified as Additional Tier 1 capital of other banks or other financial companies, which are held directly and indirectly	-	
42	Investment in financial instruments qualified as Additional Tier 1 capital of other financial institutions or consolidated financial companies, other than specified in no. 40 and 41	-	
43	Value of underlying financial instruments qualified as Additional Tier 1 capital of other financial institutions or other consolidated financial companies, in case of buying bond / equity derivatives and in case of selling protection of credit derivatives	-	
44	Investment in financial instruments qualified as Additional Tier 1 capital of companies engaged in financial business and supporting business which are held not exceeding 10% of all paid-up shares	-	
45	Investment in financial instruments qualified as Additional Tier 1 capital of companies engaged in financial business and supporting business which are held exceeding 10% of all paid-up shares	-	
46	Other items specified by the Bank of Thailand	-	
47	Deductions from Tier 2 capital, for the remaining amounts in case Tier 2 capital is insufficient to be fully deducted	-	
<b>48</b>	<b>Total regulatory deductions from Additional Tier 1 capital</b>	<b>-</b>	
<b>49</b>	<b>Total Additional Tier 1 capital (AT1)</b>	<b>0.1</b>	
<b>50</b>	<b>Total Tier 1 capital (T1 = CET1+AT1)</b>	<b>36,576</b>	
<b>Tier 2 Capital: Eligible items for Tier 2</b>			
51	Proceeds from issuance of cumulative preferred shares, after deducting the repurchase of cumulative preferred shares	-	
52	Warrants of cumulative preferred shares	-	
53	Proceeds from issuance of subordinated debts, in which the holders' right to receive payment is after depositors and creditors	2,900	M
54	Premium (discount) on the instruments under no. 50 to 52	-	
55	General provision	353	
56	Surplus of provision	881	
57	Non-controlling interest of subsidiaries which can be counted as Tier 2 capital	-	
<b>58</b>	<b>Total Tier 2 capital before deduction items</b>	<b>4,134</b>	
<b>Tier 2 Capital: Deduction items</b>			
59	Repurchase of financial instruments qualified as Tier 2 capital	-	
60	Reciprocal cross-holding in financial instruments qualified as Tier 2 capital between banks and other financial companies or other supporting business	-	
61	Investment in financial instruments qualified as Tier 2 capital of other banks or other financial companies, which are held directly and indirectly	-	
62	Investment in financial instruments qualified as Tier 2 capital of other financial institutions or consolidated financial companies, other than specified in no. 60 and 61	-	
63	Value of underlying financial instruments qualified as Tier 2 capital of other financial institutions or other consolidated financial companies, in case of buying bond / equity derivatives and in case of selling protection of credit derivatives	-	
64	Investment in financial instruments qualified as Tier 2 capital of companies engaged in financial business and supporting business which are held not exceeding 10% of all paid-up shares	-	

Unit: MM baht

Capital Funds as of December 31, 2025		Components of capital funds (d)	References under regulatory scope of consolidation (e)
65	Investment in financial instruments qualified as Tier 2 capital of companies engaged in financial business and supporting business which are held exceeding 10% of all paid-up shares	-	
66	Other items specified by the Bank of Thailand	-	
67	<b>Total regulatory deductions from Tier 2 capital</b>	-	
68	<b>Total Tier 2 capital (T2)</b>	4,134	
69	<b>Total Capital (TC = T1+T2)</b>	40,710	

Capital composition during the transitional period under Basel III

Unit: MM baht

Capital Funds as of December 31, 2025		Remaining amount subject to transitional adjustment under Basel III
<b>Common Equity Tier 1 (CET1): Eligible items for Common Equity Tier 1</b>		
1	Paid-up shares capital net of treasury stocks	8,006
2	Warrants	-
3	Premium (discount) on common share capital (net)	1,018
4	Statutory reserves	801
5	Reserve appropriated from net profit	-
6	Retained earnings after appropriation	25,693
7	Accumulated other comprehensive income	
7.1	Change in incremental from revaluation appraisal of land, buildings, or units of condominium	1,132
7.2	Gain (loss) on revaluation of available for sale equity investment	-
7.3	Gain (loss) on revaluation of available for sale debt securities	65
7.4	Gain (loss) from translation of financial statements of foreign operations	0
7.5	Gain (loss) on fair value estimation of derivatives for cash flow hedge reserve	-
7.6	Gain (loss) on hedges of a net investment in a foreign operation	-
8	Other items from owner changes	679
9	Non-controlling interest of subsidiaries operating in commercial bank business which can be counted as CET1 of consolidated financial institutions	-
10	<b>Total Common Equity Tier 1 (CET1) before regulatory adjustments and deduction items</b>	<b>37,395</b>
<b>Common Equity Tier 1 (CET1): Regulatory adjustments</b>		
11	Change in fair value of derivatives for cash flow hedge reserve	-
12	Accumulated gain (loss) on fair value option	-
13	Accumulated gain (loss) from fair value measurement of derivatives due to debit valuation adjustment	-
14	Other items specified by the Bank of Thailand	-
15	<b>Total regulatory adjustments to Common Equity Tier 1</b>	<b>-</b>
<b>Common Equity Tier 1 (CET1): Deduction items</b>		
16	Net loss	-
17	Goodwill	-
18	Intangible assets	44
19	Deferred tax assets	774
20	Shortfall of provision	-
21	Securitisation gain on sale	-
22	Reciprocal cross-holdings in common equity between banks and other financial business companies and other supporting business	-
23	Investment in equity including warrants of finance companies and credit foncier companies, which are held directly and indirectly	-
24	Investment in equity including warrants counted as CET 1 of other financial institutions or other consolidated financial institutions other than specified in no. 21 and 22	-
25	Value of underlying financial instruments countable as Tier 1 capital under shareholders' equity of other financial institutions or financial groups, in case of buying equity derivatives	-
26	Investment in equity including warrants of joint venture companies	-
27	Investment in equity including warrants of companies engaged in financial business and supporting business which are held not exceeding 10% of paid-up share in each company	-

TISCO FINANCIAL GROUP PUBLIC COMPANY LIMITED



Unit: MM baht

Capital Funds as of December 31, 2025			Remaining amount subject to transitional adjustment under Basel III
28	Investment in equity including warrants of companies engaged in financial business and supporting business which are held exceeding 10% of paid-up share in each company	-	-
29	Other items specified by the Bank of Thailand	-	
30	Deductions from Additional Tier 1 capital, for the remaining amounts in case Additional Tier 1 capital is insufficient to be fully deducted	-	
31	<b>Total regulatory deductions from Common Equity Tier 1</b>	819	
32	<b>Total Common Equity Tier 1 (CET1)</b>	36,576	
<b>Additional Tier 1 Capital: Eligible items for Additional Tier 1</b>			
33	Proceeds from issuance of non-cumulative preferred shares, after deducting the repurchase of non-cumulative preferred shares	0.1	
34	Warrants of non-cumulative preferred shares	-	
35	Proceeds from issuance of subordinated debts, in which the holders' right to receive payment is after depositors, creditors and holders of Tier 2 financial instruments	-	
36	Premium (discount) on the instruments under no. 32 to 34	-	
37	Non-controlling interest of subsidiaries which can be counted as Additional Tier 1 capital	-	-
38	<b>Total Additional Tier 1 capital before deduction items</b>	0.1	
<b>Additional Tier 1 Capital: Deduction items</b>			
39	Treasury financial instruments countable as Tier 1 capital	-	
40	Reciprocal cross-holding in financial instruments qualified as Additional Tier 1 capital between banks and other financial companies or other supporting business	-	
41	Investment in financial instruments qualified as Additional Tier 1 capital of other banks or other financial companies, which are held directly and indirectly	-	
42	Investment in financial instruments qualified as Additional Tier 1 capital of other financial institutions or consolidated financial companies, other than specified in no. 39 and 40	-	
43	Value of underlying financial instruments qualified as Additional Tier 1 capital of other financial institutions or other consolidated financial companies, in case of buying bond / equity derivatives and in case of selling protection of credit derivatives	-	
44	Investment in financial instruments qualified as Additional Tier 1 capital of companies engaged in financial business and supporting business which are held not exceeding 10% of all paid-up shares	-	-
45	Investment in financial instruments qualified as Additional Tier 1 capital of companies engaged in financial business and supporting business which are held exceeding 10% of all paid-up shares	-	-
46	Other items specified by the Bank of Thailand	-	
47	Deductions from Tier 2 capital, for the remaining amounts in case Tier 2 capital is insufficient to be fully deducted	-	
48	<b>Total regulatory deductions from Additional Tier 1 capital</b>	-	
49	<b>Total Additional Tier 1 capital (AT1)</b>	0.1	
50	<b>Total Tier 1 capital (T1 = CET1+AT1)</b>	36,576	
<b>Tier 2 Capital: Eligible items for Tier 2</b>			
51	Proceeds from issuance of cumulative preferred shares, after deducting the repurchase of cumulative preferred shares	-	
52	Warrants of cumulative preferred shares	-	
53	Proceeds from issuance of subordinated debts, in which the holders' right to receive payment is after depositors and creditors	2,900	-
54	Premium (discount) on the instruments under no. 50 to 52	-	
55	General provision	353	
56	Surplus of provision	881	
57	Non-controlling interest of subsidiaries which can be counted as Tier 2 capital	-	-
58	<b>Total Tier 2 capital before deduction items</b>	4,134	

Unit: MM baht

Capital Funds as of December 31, 2025		Remaining amount subject to transitional adjustment under Basel III
<b>Tier 2 Capital: Deduction items</b>		
59	Repurchase of financial instruments qualified as Tier 2 capital	-
60	Reciprocal cross-holding in financial instruments qualified as Tier 2 capital between banks and other financial companies or other supporting business	-
61	Investment in financial instruments qualified as Tier 2 capital of other banks or other financial companies, which are held directly and indirectly	-
62	Investment in financial instruments qualified as Tier 2 capital of other financial institutions or consolidated financial companies, other than specified in no. 59 and 60	-
63	Value of underlying financial instruments qualified as Tier 2 capital of other financial institutions or other consolidated financial companies, in case of buying bond / equity derivatives and in case of selling protection of credit derivatives	-
64	Investment in financial instruments qualified as Tier 2 capital of companies engaged in financial business and supporting business which are held not exceeding 10% of all paid-up shares	-
65	Investment in financial instruments qualified as Tier 2 capital of companies engaged in financial business and supporting business which are held exceeding 10% of all paid-up shares	-
66	Other items specified by the Bank of Thailand	-
67	<b>Total regulatory deductions from Tier 2 capital</b>	<b>-</b>
68	<b>Total Tier 2 capital (T2)</b>	<b>4,134</b>
69	<b>Total Capital (TC = T1+T2)</b>	<b>40,710</b>

Capital instruments which are not qualified under Basel III requirement will be phased out at the rate of 10% each year since 2013 and will no longer be included as capital from 2022 onward. For TISCO Group, there was no capital instrument unqualified under Basel III at the end of December 2025.